

2007



MODEL SCENERY FOR CONVINCING REALISM  
WOODLAND SCENICS®





## ***Step into the world of Woodland Scenics®...***

**Woodland Scenics® is the world's leading manufacturer in the model railroading scenery market. We provide you with a complete line of products to build a model railroad layout, starting with the base and ending with finished landscaping, including all the fine detail. Our products have been used extensively in movies and many museum displays enjoyed daily by the general public.**

**For the ultimate realism in model building - whether you're a model railroader, gamer, architectural modeler or any other hobbyist - you can depend on Woodland Scenics® to make your model come to life. This catalog features all the products you will need, plus tips on how you can do it!**





<b>Teaching Aids .....</b>	<b>4</b>
<b>Learning Kits .....</b>	<b>5</b>
<b>SubTerrain System .....</b>	<b>6-9</b>
<b>Track-Bed .....</b>	<b>10-11</b>
<b>Terrain System .....</b>	<b>12-16</b>
<b>Landscaping System .....</b>	<b>17-28</b>
<b>Ready Made Trees .....</b>	<b>29-33</b>
<b>Tree Kits.....</b>	<b>34-35</b>
<b>Scenic Accents® .....</b>	<b>36-46</b>
<b>Built-&amp;-Ready® Structures .....</b>	<b>47</b>
<b>AutoScenes® .....</b>	<b>48-49</b>
<b>Mini-Scene® .....</b>	<b>50</b>
<b>Scenic Details® .....</b>	<b>51-54</b>
<b>Complete Scenes .....</b>	<b>55</b>
<b>Trackside Scenes .....</b>	<b>56</b>
<b>Dry Transfer Decals .....</b>	<b>57-60</b>
<b>Model Graphics® .....</b>	<b>61</b>
<b>Mod-U-Rail® System.....</b>	<b>62-65</b>
<b>Layout Kits.....</b>	<b>66, 68</b>
<b>Building Kits.....</b>	<b>67, 69</b>
<b>Scenery Kits .....</b>	<b>68, 70-71</b>
<b>Hob-Bits® .....</b>	<b>72</b>
<b>Hob-E-Lube® .....</b>	<b>72</b>
<b>Scene-A-Rama™ School Projects .....</b>	<b>73</b>
<b>Merchandisers and Assortments.....</b>	<b>74-82</b>
<b>Index .....</b>	<b>83</b>

Our Web site, [www.woodlandscenics.com](http://www.woodlandscenics.com), is an educational resource for model scenery. We have "How-To Demos," tips, techniques and more. Look for the "How-To Demos" icons which are next to products used in our "How-To Demos."





## See The Videos...Read The Books

Build models the easy way using Woodland Scenics® SubTerrain, Terrain and Landscaping Systems. Start with the SubTerrain Lightweight Layout System® which shows you how to build a complete layout in five easy steps without using power tools or complicated calculations. Move on to the basics of planning terrain modeling: valleys, hills, mountains and other natural features. Create realistic scenery by adding ground covers, trees, water features and other scenery details.

### **SubTerrain: Build a Layout Fast and Easy**

**VHS ST1401 - DVD ST1400**

A step-by-step video that shows you how to build a model railroad layout with the revolutionary SubTerrain Lightweight Layout System®.

*58 minutes*



### **The Clinic**

**VHS R990 - DVD R970**

Watch the professionals demonstrate terrain and landscaping techniques to a standing-room-only crowd at a National Model Railroad Association convention.

*75 minutes*



### **Model Scenery Made Easy**

**VHS R993 - DVD R973**

This comprehensive video was produced for every level of modeler. It will show you the easy way to add realism with ground covers, trees, accents, details and water products.

*60 minutes*



### **Build a Display for Collectible Houses**

**VHS CH1056 - DVD CH1055**

This step-by-step video teaches you how to build a 31 x 44-inch display for collectible houses. The display can be shown year-round and modified to fit any table, buffet, TV, dresser, fireplace opening or mantel.

*60 minutes*



### **SubTerrain Manual** ST1402

An illustrated, how-to manual that teaches you how to create the ideal lightweight layout for model trains using five easy steps. Over 200 illustrations and photos.

*84 pages*



### **The Scenery Manual** C1207

This spiral-bound manual is for any modeler who wants to learn the techniques for creating realistic scenes. The colored illustrations, photos and tech tips show how to use over 600 products.

*144 pages*





## Learning Kits

Our Learning Kits are value-packed tools that teach the beginning model railroader and other hobbyists how to use our Terrain and Landscaping Systems. Learn how to make, color and install rocks, create paved areas, make trees, landscape your layout, put water areas on your layout and add the finishing touches. The kits are available in clamshell packaging for easy product visibility. The package is resealable and can be used for storage.



### Rock Faces

LK951

Teaches modelers to make and color realistic rock formations. Kit includes a rubber Rock Mold, Lightweight Hydrocal\*, Plaster Cloth, Earth Colors Liquid Pigments and applicator. *Yields four to five rocks.*



### Road System

LK952

Teaches modelers how to easily add roads and other paved areas to any layout. Kit includes Paving Tape with a spreader, Smooth-It, sandpaper, Asphalt Top Coat and applicator. *Covers approx. 3" x 4'.*



### Trees

LK953

Teaches modelers how easy it is to make and add trees to their layout. Kit includes deciduous and pine Tree Armatures, two colors of Clump-Foliage and Hob-e-Tac® Adhesive. *18 Tree Armatures*



### Landscaping

LK954

Teaches modelers to blend and texture our complete line of scenery products. Kit includes seven colors of ground cover, Scenic Cement with a spray head and Earth Undercoat with an applicator. *Covers a 2' x 2' surface area.*



### River/Waterfall

LK955

Teaches modelers how to create the illusion of water depth, make a river and a waterfall. Kit includes Realistic Water, Water Effects, Plaster Cloth, Talus, Fine Turf, Scenic Glue, Earth Colors Liquid Pigment and applicator. *Makes 2 1/2" x 9" river and a 2 1/2" x 4" waterfall.*



### Scenery Details

LK956

Teaches modelers valuable detailing skills. Kit includes Underbrush, Bushes, Turf, Fine-Leaf Foliage, Flowering Foliage, Field Grass, Poly Fiber, Dead Fall and Scenic Glue. *Covers a 2' x 2' area.*



# BUILD A LAYOUT IN 5 EASY STEPS

**NO Expensive Power Tools**  
**NO Dusty Mess**  
**NO Complicated Calculations**  
**NO Experience Necessary**

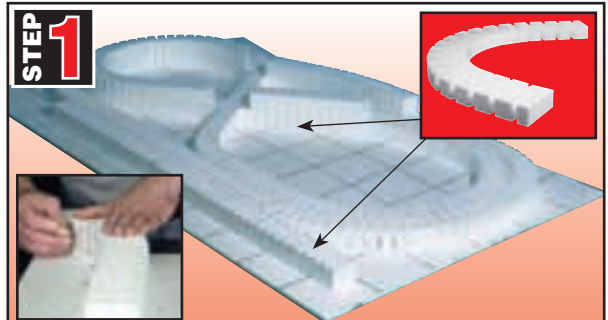
## SubTerrain Lightweight Layout System®

Woodland Scenics® has simplified the process. Build a layout fast and easy. SubTerrain is the most innovative foam system for building layouts for model trains. The revolutionary, high-density foam components of the SubTerrain System are extremely lightweight and easy to use. They require no expensive power tools, there is no dusty mess, no complicated calculations and most importantly, no experience is necessary.

### Risers\*

Risers are flexible. They easily form curves and can be used on a plywood or foam base. Use at least 2" Risers to elevate your track. To install, butt sections tightly, pin in place with Foam Nails and attach with Low Temp Foam Glue or Foam Tack Glue. *Each piece is 2 1/2" wide x 24" long.*

1/2" (4 per pkg.)	ST1406
3/4" (4 per pkg.)	ST1414
1" (4 per pkg.)	ST1407
2" (4 per pkg.)	ST1408
4" (2 per pkg.)	ST1409

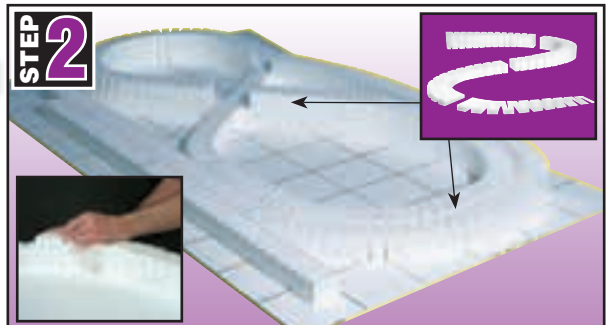


**Risers elevate the track from a flat surface so low lying areas can be created.**

### Incline Sets and Starters\*

Inclines are flexible and allow a smooth transition from one height to another. To install, center the Incline on the Riser, butt sections tightly, pin in place and attach with Low Temp Foam Glue or Foam Tack Glue. Starters are identical pieces that can be used alone, or with Sets to start your track on an incline. *Each piece is 2 1/2" wide x 24" long.*

2% SET (8 per set) Elevates track 4" in 16'	ST1410
3% SET (6 per set) Elevates track 4 1/2" in 12'	ST1416
4% SET (4 per set) Elevates track 4" in 8'	ST1411
2% STARTER (8 per pkg.) Raises the elevation 1/2"	ST1412
3% STARTER (6 per pkg.) Raises the elevation 3/4"	ST1415
4% STARTER (4 per pkg.) Raises the elevation 1"	ST1413

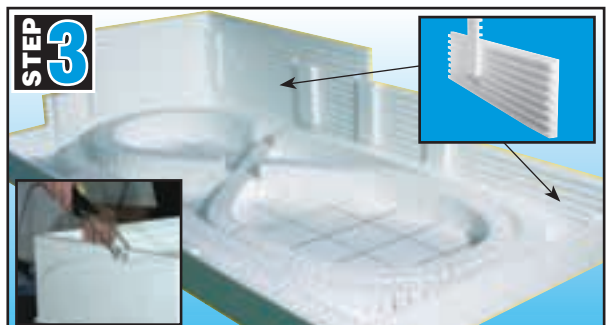


**Inclines provide the proper change in elevation so your train runs smoothly.**

### Profile Boards

Profile Boards create the perimeter of your layout to define the contours. Their special interlocking design makes them easy to join together with the use of matching Connectors. They can be placed end-to-end, or stacked and locked together, then trimmed with a Hot Wire Foam Cutter to create mountain profiles. *Each Profile Board is 8" tall x 24" long.*

2 Boards and 2 Connectors	ST1419
---------------------------	--------



**Profile Boards add sides, so terrain contours can be created with the Hot Wire Foam Cutter.**

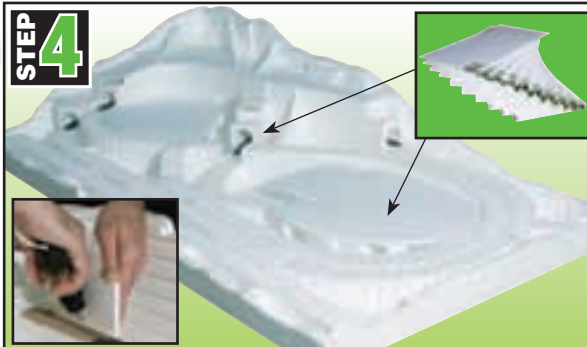
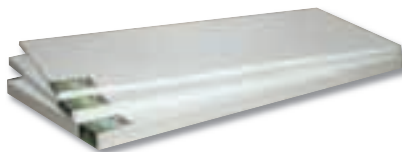


## Foam Sheets

Use Foam Sheets to create flat areas for towns. Also use for tunnels, contour supports and layout bases. Build supports with scrap foam to elevate the Foam Sheets and attach with Low Temp Foam Glue or Foam Tack Glue. The 1/4" sheet can be bent into a radius.

*Each piece is 12" wide x 24" long.*

1/4" (1 pc.).....	ST1422
1/2" (1 pc.).....	ST1423
1" (1 pc.).....	ST1424
2" (1 pc.).....	ST1425
3" (1 pc.).....	ST1426
4" (1 pc.).....	ST1427

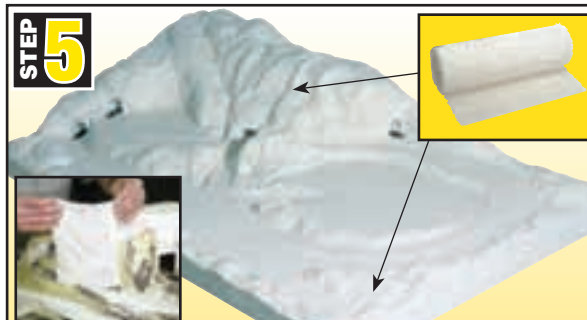


Foam sheets are used for flat areas, tunnels and layout bases.

## Plaster Cloth C1203

A simple, convenient and lightweight way to create a durable terrain shell. Just wad newspaper and stack to form desired terrain areas. Hold the wads in place with masking tape. Dip Plaster Cloth in water and smooth over terrain areas. The Plaster Cloth will dry to a hard shell.

*8" wide x 15' long roll, 10 sq. ft.*



Plaster Cloth covers newspaper wads to create a hard shell for landscaping.

**Allows the beginner to create a craftsman quality layout.**





### Foam Pencils ST1431

Foam Pencils have a special lead designed to draw on foam without causing damage. The colors will not bleed through paint or other coverings.  
2 red, 2 black



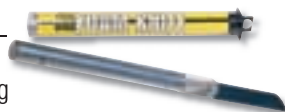
### Foam Nails ST1432

Use Foam Nails to temporarily pin Track-Bed, track, foam or other products to your layout.  
2"- 75/pk



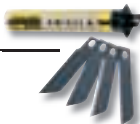
### Foam Knife ST1433

The Foam Knife comes with a 2-inch replaceable blade that is ideal for cutting thick pieces of foam.  
1 knife/pk.



### Foam Knife Blades ST1434

Replacement blades for Foam Knife.  
4 blades/pk.



### Foam Tack Glue ST1444

This specially formulated glue is high tack and effective on most materials, especially foam. Use as a contact cement whenever bonding two large surfaces.  
12 fl. oz.



### Hot Wire Foam Cutter ST1435

The Hot Wire Foam Cutter has adjustable collars, allowing for clean, accurate cuts in foam. It has a cutting path that is 4 1/2" wide and 6" deep. Woodland Scenics® recommends using their cutter only on SubTerrain white foam, which emits no toxic fumes. Only use the special Nichrome replacement wire.



### International Hot Wire Foam Cutters

**230V Hot Wire Foam Cutter**..... ST14401  
(Transformer/Plug Europe)

**230V Hot Wire Foam Cutter**..... ST14402  
(Transformer/Plug UK)

**240V Hot Wire Foam Cutter**..... ST14403  
(Transformer/Plug Australia/New Zealand)

### Hot Wire Foam Cutter Replacement Wire ST1436

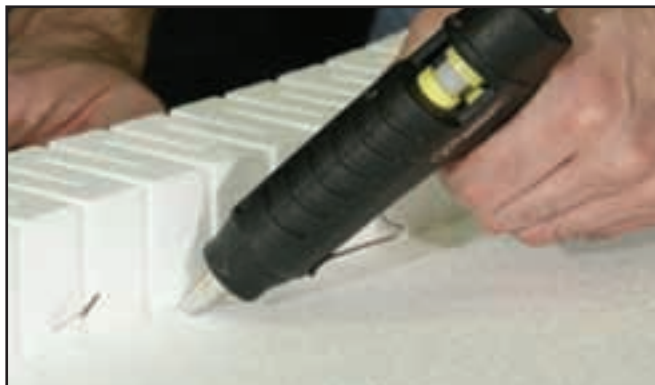
Special Nichrome wire retains an even temperature needed to cut our foam products.  
4 feet



### Foam Cutter Bow & Guide ST1437

The Bow attachment adds versatility to the Hot Wire Foam Cutter. Attach the Guide for precise angled cuts (handle not included).





**Low Temp Foam Glue Gun ST1445**  
**Low Temp Foam Glue Sticks ST1446**

The Low Temp Foam Glue Gun, with the Low Temp Foam Glue Sticks, operates at a temperature that will not damage foam and bonds instantly.

*10 sticks, 10" long*



**Foam Putty ST1447**

Foam putty is non-shrinking, lightweight filling material that has the same characteristics as foam, and is used to fill cracks and gaps.

*1 pint/28 cu. in.*



**Flex Paste C1205**

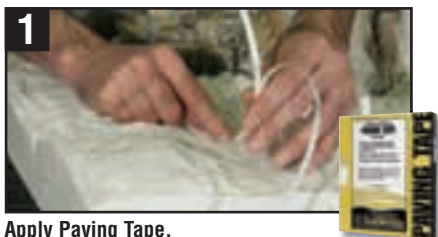
This flexible, non-cracking modeling paste can be used to create a hard surface and as a filler or primer on foam. It can also be used as a road base or sealer under model water. Excellent for modeling heavy snow drifts. Apply Flex Paste and sprinkle Soft Flake Snow on top.

*16 fl. oz.*



**Road System**

Use for any asphalt or concrete surface, such as roads, streets, sidewalks or parking lots. Accomplish in three easy steps. Refer to page 5 for the Road System Learning Kit (LK952).



**1**  
Apply Paving Tape.

**Paving Tape ST1455**

This adhesive-backed foam tape is used to create a form for making streets, roads, sidewalks and parking lots. A 5 1/4" wide smoothing spreader is included.

*1/4" x 30'*



**2**  
Spread Smooth-It.

**Smooth-It ST1452**

This plaster material is used to fill the forms created from the Paving Tape. Can also be used to fill rough areas on streets and roads.

*1 qt./55 cu. in.*



**3**  
Paint with Top Coat.

**Top Coat Asphalt ST1453**  
**Top Coat Concrete ST1454**

Use full-strength or dilute with water. For blacktop surfaces use Asphalt Top Coat. Color highways, streets and sidewalks with Concrete Top Coat.

*4 fl. oz.*



# TRACK-BED

N scale

HO scale

O scale

## Track-Bed

This roadbed product provides a quiet, smooth train operation and absorbs irregularities on your layout. It gives you a high-quality, economical alternative to other roadbeds. Track-Bed requires no pre-soaking like cork, remains flexible and won't dry out or become brittle. It aligns well with cork on any layout and is available in Rolls, Strips, Sheets and Super Sheets. For an almost seamless application, use the 24-foot Rolls. All Track-Bed comes in N, HO and O scale.

### TAKE THE TEST!

Modelers: take the "Knocker Test!" The Tester Board is located on Track-Bed and SubTerrain Merchandisers found at your local hobby shop. This Tester Board shows the incredible difference between the sound and vibration-deadening properties of Track-Bed over cork. Once you pick up the Tester Board and test it for yourself, you will choose Track-Bed for your layouts.

#### Advantages over cork:

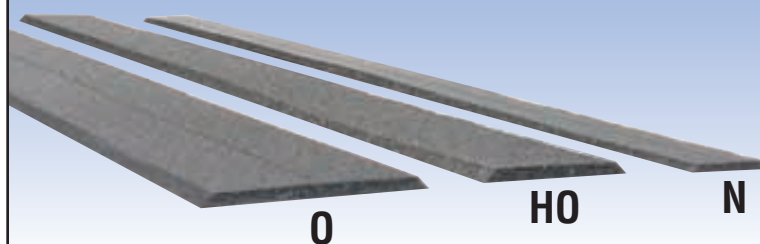
- Smoother, quieter operation
- Easier to use
- More affordable
- No drying out or crumbling



Awarded the NMRA conformance seal.  
All Track-Bed widths comply with NMRA standards.



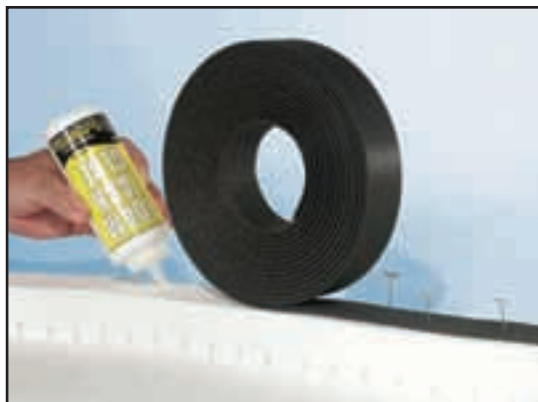
### Track-Bed scales for Rolls and Strips



## Rolls

Track-Bed Rolls offer a smooth, almost seamless application.

<b>N Scale</b> (3mm x 24" - Seamless Roll).....	ST1475
<b>HO Scale</b> (5mm x 24" - Seamless Roll).....	ST1474
<b>O Scale</b> (5mm x 24" - Seamless Roll).....	ST1476



## Strips

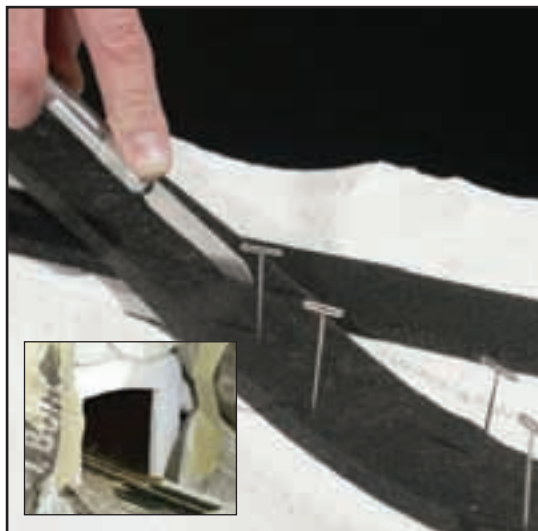
Use Track-Bed Strips for easy application. They are especially good for tight areas.

### Standard Pack

<b>N Scale</b> (3mm x 24" - 12 pieces per pkg.) .....	ST1472
<b>HO Scale</b> (5mm x 24" - 12 pieces per pkg.).....	ST1471
<b>O Scale</b> (5mm x 24" - 12 pieces per pkg.) .....	ST1473

### Bulk Pack

<b>N Scale</b> (3mm x 24" - 36 pieces per pkg.) .....	ST1462
<b>HO Scale</b> (5mm x 24" - 36 pieces per pkg.).....	ST1461
<b>O Scale</b> (5mm x 24" - 36 pieces per pkg.) .....	ST1463



## Sheets

Use Track-Bed Sheets for railyards or sidings.

<b>N Scale</b> (3 1/4" x 3mm x 24" - 6 pieces per pkg.).....	ST1460
<b>HO/O Scale</b> (5" x 5mm x 24" - 6 pieces per pkg.) .....	ST1470



## Super Sheets

Track-Bed Super Sheets are great for railyards or sidings.

<b>N Scale</b> (3mm x 12" x 24" - 1 each) .....	ST1478
<b>HO/O Scale</b> (5mm x 12" x 24" - 1 each) .....	ST1477







## Terrain System

Woodland Scenics® terrain products are a complete system for beginners and craftsman modelers. The Terrain System has all the products needed to make earth contour models that reflect any type of terrain. Each product has easy-to-follow instructions which make ultimate scenic realism both simple and convenient.

### Plaster Cloth C1203

There is no easier, more convenient or lightweight way to create a durable shell or terrain base. This plaster-coated cloth is designed for terrain modeling. It is used to form a hard shell that easily accepts coloring, plaster castings and landscape materials. It is also used to fill in terrain gaps and re-sculpt around terrain features.  
*8" wide x 15' long roll, 10 sq. ft.*



### Mold-A-Scene Plaster C1202

This plaster material can be shaped like modeling clay, but sets like plaster. It can also be used as a texturizing compound. Its longer setting time allows a modeler to add terrain contours to new or existing scenery. It is excellent for dioramas, layouts and models, as well as volcanoes and other school projects. Dries overnight.  
*1/2 gal./104 cu. in.*



## Tunnel Portals

Tunnel Portals are plaster castings that are easy to color with Earth Colors Liquid Pigments. They come in single or double track widths.



### Concrete Single

C1252 - HO Scale (1 each)  
Outside: 5 3/8" x 4 7/8"  
Inside: 2 11/16" x 3 11/16"  
C1152 - N Scale (2 each)  
Outside: 2 7/8" x 2 1/2"  
Inside: 1 7/16" x 1 7/8"



### Cut Stone Single

C1253 - HO Scale (1 each)  
Outside: 6 1/16" x 5 5/16"  
Inside: 2 3/4" x 3 3/4"  
C1153 - N Scale (2 each)  
Outside: 3 1/4" x 2 11/16"  
Inside: 1 7/16" x 1 7/8"



### Timber Single

C1254 - HO Scale (1 each)  
Outside: 4 7/8" x 5 1/8"  
Inside: 2 5/8" x 3 3/4"  
C1154 - N Scale (2 each)  
Outside: 2 5/8" x 2 11/16"  
Inside: 1 5/16" x 2"



### Random Stone Single

C1255 - HO Scale (1 each)  
Outside: 5 11/16" x 5 1/8"  
Inside: 2 13/16" x 3 3/4"  
C1155 - N Scale (2 each)  
Outside: 3" x 2 11/16"  
Inside: 1 5/8" x 1 15/16"



### Concrete Double

C1256 - HO Scale (1 each)  
Outside: 7 3/8" x 4 7/8"  
Inside: 4 5/8" x 3 13/16"  
C1156 - N Scale (2 each)  
Outside: 3 7/8" x 2 1/2"  
Inside: 2 7/16" x 2 1/16"



### Cut Stone Double

C1257 - HO Scale (1 each)  
Outside: 8 1/16" x 5 1/4"  
Inside: 4 3/4" x 3 7/8"  
C1157 - N Scale (2 each)  
Outside: 4" x 2 13/16"  
Inside: 2 9/16" x 2"

## Retaining Walls\*

Retaining Walls are plaster castings that are easy to color. They can be used alone, installed adjacent to each other to create straight or curved walls, or used with Tunnel Portals. They can be cut to varying heights to create stepped winged walls.



### Concrete

C1258 - HO Scale (3 each)  
4 15/16" x 2 11/16"  
C1158 - N Scale (6 each)  
2 11/16" x 1 5/16" (105' scale length)



### Cut Stone

C1259 - HO Scale (3 each)  
5 3/8" x 3 3/16"  
C1159 - N Scale (6 each)  
2 11/16" x 1 11/16" (140' scale length)



### Timber

C1260 - HO Scale (3 each)  
5 1/16" x 2 7/16"  
C1160 - N Scale (6 each)  
2 11/16" x 1 1/4" (100' scale length)



### Random Stone

C1261 - HO Scale (3 each)  
5" x 3"  
C1161 - N Scale (6 each)  
2 3/4" x 1 11/16" (132' scale length)

## Culverts

Where there are embankments, there is water run-off to control. Our Culverts are extremely realistic plaster castings that are easy to color. No serious railroad scene would be complete without a detailed Culvert or two to add realism.



### Concrete

C1262 - HO Scale (2 each)  
C1162 - N Scale (2 each)



### Masonry Arch

C1263 - HO Scale (2 each)  
C1163 - N Scale (2 each)



### Random Stone

C1264 - HO Scale (2 each)  
C1164 - N Scale (2 each)



### Timber

C1265 - HO Scale (2 each)  
C1165 - N Scale (2 each)





## **Lightweight Hydrocal C1201 Bulk C1201-B**

Lightweight Hydrocal has been specially formulated for terrain model builders, and is half the weight of Hydrocal. Mix according to instructions and pour into rock molds to create various rock formations. Also great for creating hard shell terrain, and for filling in around rocks and other castings.

Available in two sizes.

1/2 gal./104 cu. in.

5 gal./1344 cu. in.

Refer to page 5 for the Rock Faces Learning Kit (LK951).



## **Rock Molds**

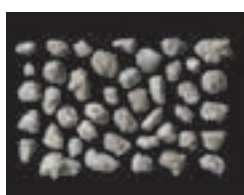
Woodland Scenics® Rock Molds are durable, flexible, reusable and well detailed. Use Lightweight Hydrocal to cast small boulders, rock outcroppings, rocks for fields and creeks or entire rock faces. Color with Earth Colors Liquid Pigments.



**Outcroppings**  
C1230 (5" x 7")



**Surface Rocks**  
C1231 (5" x 7")



**Boulders**  
C1232 (5" x 7")



**Embankments**  
C1233 (5" x 7")



**Washed Rock**  
C1242 (5" x 10 1/2")



**Random Rock**  
C1234 (5" x 7")



**Laced Face Rock**  
C1235 (5" x 7")



**Classic Rock**  
C1236 (5" x 7")



**Wind Rock**  
C1237 (5" x 7")



**Base Rock**  
C1243 (5" x 10 1/2")



**Weathered Rock**  
C1238 (5" x 7")



**Strata Stone**  
C1239 (5" x 7")



**Rock Mass**  
C1240 (5" x 7")



**Layered Rock**  
C1241 (5" x 7")



**Facet Rock**  
C1244 (5" x 10 1/2")

## Earth Colors Liquid Pigment

Use the eight different colors of Earth Colors Liquid Pigments to color rocks, terrain and plaster castings. They are water-soluble and can be diluted and blended in limitless combinations. Extremely concentrated for economical usage.

4 fl. oz.



**White**

C1216



**Concrete**

C1217



**Stone Gray**

C1218



**Slate Gray**

C1219



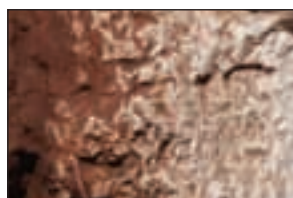
**Black**

C1220



**Raw Umber**

C1221



**Burnt Umber**

C1222



**Yellow Ocher**

C1223

## Earth Colors Liquid Pigment (Undercoat)

Formulated for use under Blended Turf to provide a base color for terrain. Extremely concentrated.

8 fl. oz.



**Green Undercoat**

C1228



**Earth Undercoat**

C1229



## Earth Color Kit C1215

This kit includes eight Earth Colors Liquid Pigments, applicator and palette.

1 fl. oz. ea.

- White
- Concrete
- Stone Gray
- Slate Gray
- Black
- Raw Umber
- Burnt Umber
- Yellow Ocher





## Tunnel Liner Form C1250

This innovative mold is ideal for casting realistic rock walls and ceilings for scale tunnels on your pike. It is designed to form half of either a single or double liner section.

*HO scale*



1. Use a spatula to fill the Tunnel Liner Form with Lightweight Hydrocal. When dry, remove from mold.



2. Join two half sections on top with a strip of wet Plaster Cloth to form a hinge.



3. Join completed units on one side for a longer tunnel. The unattached side can be raised for track maintenance.

## Latex Rubber C1204

Latex Rubber works great for making your own hopper loads, rocks or other molds. This ready-to-use Latex Rubber is formulated to be thin enough to seek detail and thick enough to be durable. Create long-lasting molds with just a few coats.

*16 fl. oz.*



1. Brush three to six layers of Latex Rubber on rocks, hopper loads or other items.



2. Put gauze between each layer of Latex Rubber.



3. Allow each layer to dry between applications.



4. When completely dry, carefully pull off the mold.



5. Make castings with Lightweight Hydrocal.



6. Allow Hydrocal to dry thoroughly before removing from mold.

## Talus (Rock Debris)

Everywhere there is a rock face, an outcropping of rocks or a road cut, there is rock debris of various sizes and shades. Talus is a lightweight material used for modeling rock debris. Just sprinkle on some Talus and secure with a 50/50 mixture of Scenic Glue and water. Intermix grades and blend shades for the most realism. Modify Talus colors with Earth Colors Liquid Pigments, if desired.

*25 cu. in.*



### GRADES

*Shown actual size*



**Fine**



**Medium**



**Coarse**



**Extra Coarse**

### COLORS



**Buff**



**Brown**

<b>Fine</b>	C1270
<b>Medium</b>	C1271
<b>Coarse</b>	C1272
<b>Extra Coarse</b>	C1273

<b>Fine</b>	C1274
<b>Medium</b>	C1275
<b>Coarse</b>	C1276
<b>Extra Coarse</b>	C1277



**Gray**



**Natural**

<b>Fine</b>	C1278
<b>Medium</b>	C1279
<b>Coarse</b>	C1280
<b>Extra Coarse</b>	C1281

<b>Fine</b>	C1282
<b>Medium</b>	C1283
<b>Coarse</b>	C1284
<b>Extra Coarse</b>	C1285





## Landscaping System

Landscaping adds color, texture and realism to terrain contours. The Landscaping System includes all the products needed for adding ground cover, plants and trees to a layout. Produce realistic scenery whether you are a beginner or advanced modeler. The products are formulated to mix and blend for ultimate realism. Each item is easy to use and virtually foolproof.

### ADHESIVES AND ACCESSORIES

#### Scenic Glue S190

This specially-formulated, high-tack, non-odorous adhesive is for applying landscape materials. Dries clear with a matte finish. Does not crack or turn yellow.

8 fl. oz.



#### Hob-e-Tac® S195

This multi-purpose, water-soluble adhesive stays tacky. Use for making trees and attaching Field Grass to your layout. Apply Hob-e-Tac®, wait until clear and tacky, then attach foliage products.

2 fl. oz.



#### Scenic Cement S191 **NEW & IMPROVED**

Our new and improved adhesive is a water-based, ready-to-use matte medium which dries clear. This new formula has improved strength and flows easily. It inhibits beading and clumping of products where sprayed. It is especially great for sealing and attaching Fine, Blended and Coarse Turfs, Static Grass Flock, Poly Fiber, Ballast, Flowering Foliage and other foliage. Use with Scenic Sprayer (S192).

16 fl. oz.

#### Scenic Sprayer S192

The Scenic Sprayer comes with a siphon tube and spray head that fits the Scenic Cement bottle. The nozzle adjusts from a fine mist to a steady stream. Measurement markings in ounces and milliliters are on the side. Use for Scenic Cement, Earth Colors Liquid Pigment and other liquids.

Holds 8 ounces.



#### Canister Shaker S194

This Canister Shaker is perfect for storage of all landscaping products. It comes with a dual-purpose cap: one side is a shaker and the other pours large amounts. Includes a blank identification label.

Holds 32 ounces.



#### Canister Shaker Set S199

Organize and store your landscaping products with a set of Canister Shakers, which can be hung on pegboard or set on your workbench. They come with six blank labels to identify the product in the canister.

Each Shaker holds 32 ounces.



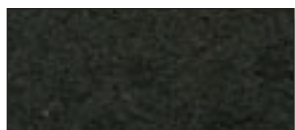


## Fine Turf

Fine Turf adds texture and highlights to trees and scenery. It is available in six realistic colors, which model fresh, scorched and dying grasses, weeds and dirt roads. Attach with Scenic Cement.  
Bag 18 cu. in./Shaker 50 cu. in.



particle approx. 1/1000"-1/32"



**Soil**  
T41 (Bag)  
T1341 (Shaker)



**Earth**  
T42 (Bag)  
T1342 (Shaker)



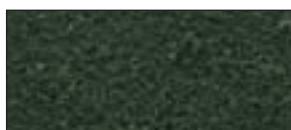
**Yellow Grass**  
T43 (Bag)  
T1343 (Shaker)



**Burnt Grass**  
T44 (Bag)  
T1344 (Shaker)



**Green Grass**  
T45 (Bag)  
T1345 (Shaker)



**Weeds**  
T46 (Bag)  
T1346 (Shaker)

## Blended Turf

Use Blended Turf as a base covering over Earth Colors Undercoat Pigment to model grass, weeds and other low growing plants. It is available in two colors. Attach with Scenic Cement.  
Bag 54 cu. in./Shaker 50 cu. in.



**Green Blend**  
T49 (Bag)  
T1349 (Shaker)



**Earth Blend**  
T50 (Bag)  
T1350 (Shaker)

## Coarse Turf

Coarse Turf models low grasses, leaves, weeds and adds texture and highlights to trees and scenery. It provides a smooth transition from low to medium and high ground cover and is available in 11 natural colors. Attach with Scenic Cement.  
Bag 18 cu. in./Shaker 50 cu. in.



particle approx. 1/32"-1/8"



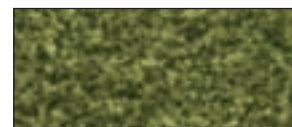
**Earth**  
T60 (Bag)



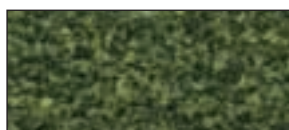
**Yellow Grass**  
T61 (Bag)  
T1361 (Shaker)



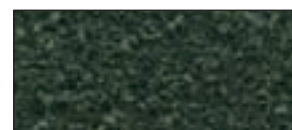
**Burnt Grass**  
T62 (Bag)  
T1362 (Shaker)



**Light Green**  
T63 (Bag)  
T1363 (Shaker)



**Medium Green**  
T64 (Bag)  
T1364 (Shaker)



**Dark Green**  
T65 (Bag)  
T1365 (Shaker)



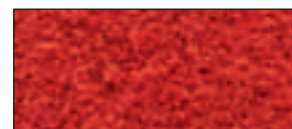
**Conifer**  
T1366 (Shaker)



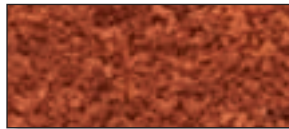
**Fall Yellow**  
T1353 (Shaker)



**Fall Orange**  
T1354 (Shaker)



**Fall Red**  
T1355 (Shaker)



**Fall Rust**  
T1356 (Shaker)

## Underbrush\*

Underbrush models low to medium ground cover, and is the perfect product for making small to medium trees. It is available in six colors for realistic bushes, trees and shrubs. Attach to Tree Armatures with Hob-e-Tac®. Use Scenic Glue to attach to layout.

Bag 18 cu. in./Shaker 50 cu. in.

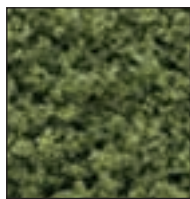


particle approx. 1/8"-5/16"



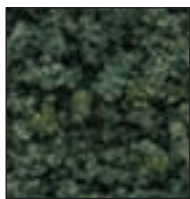
**Olive Green**

FC134 (Bag)  
FC1634 (Shaker)



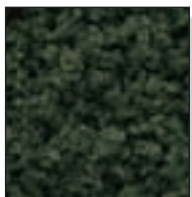
**Light Green**

FC135 (Bag)  
FC1635 (Shaker)



**Medium Green**

FC136 (Bag)  
FC1636 (Shaker)



**Dark Green**

FC137 (Bag)  
FC1637 (Shaker)



**Forest Green**

FC138 (Bag)  
FC1638 (Shaker)



**Forest Blend**

FC139 (Bag)  
FC1639 (Shaker)

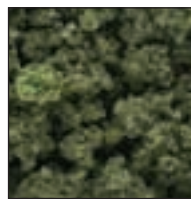
## Bushes\*

Bushes models medium to high ground cover, such as bushes, shrubs and trees, and is the perfect product for making medium to large trees. It is available in six realistic colors. Attach to Tree Armatures with Hob-e-Tac®. Use Scenic Glue to attach to layout.

Bag 18 cu. in./Shaker 50 cu. in.

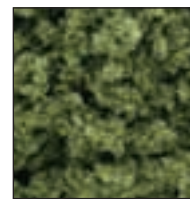


particle approx. 5/16"-1/2"



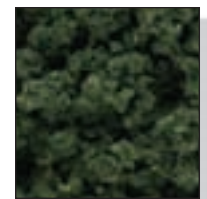
**Olive Green**

FC144 (Bag)  
FC1644 (Shaker)



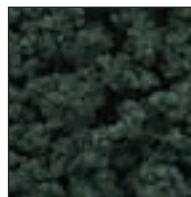
**Light Green**

FC145 (Bag)  
FC1645 (Shaker)



**Medium Green**

FC146 (Bag)  
FC1646 (Shaker)



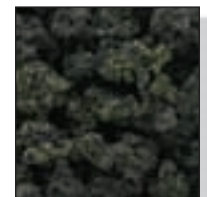
**Dark Green**

FC147 (Bag)  
FC1647 (Shaker)



**Forest Green**

FC148 (Bag)  
FC1648 (Shaker)



**Forest Blend**

FC149 (Bag)  
FC1649 (Shaker)

## Static Grass Flock

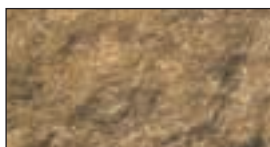
Static Grass Flock is a fiber product that models grass or weeds on any layout. It is available in six colors and can be used alone, or with Fine Turf. Place under trees or along ditches. It can also be used as forest litter. Use Scenic Cement to attach to layout.

Shaker 50 cu. in.



**Wild Honey**

FL631



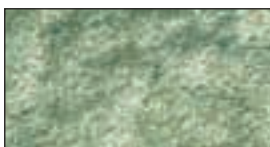
**Harvest Gold**

FL632



**Burnt Grass**

FL633



**Light Green**

FL634



**Medium Green**

FL635



**Dark Green**

FL636





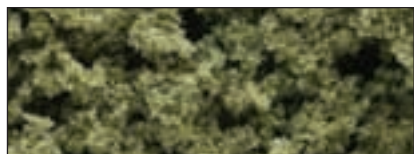
## Clump-Foliage\*

Clump-Foliage models medium to high ground cover. It is great for landscaping hillsides. Create shrubs, bushes and trees with five colors and a fall mix. Attach to Tree Armatures with Hob-e-Tac®. Attach to layout with Scenic Glue.

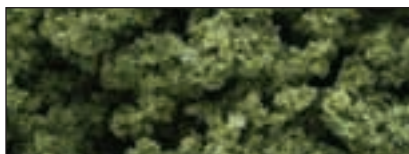
Small Bag 55 cu. in./Large Bag 165 cu. in.



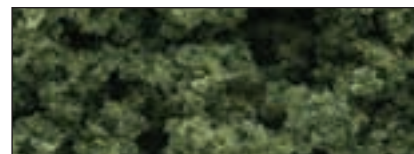
particle approx. 1/8"-1 1/2"



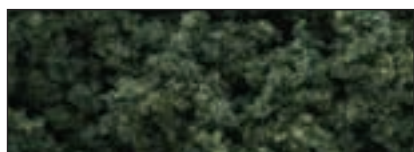
**Burnt Grass**  
FC181 (Large Bag)



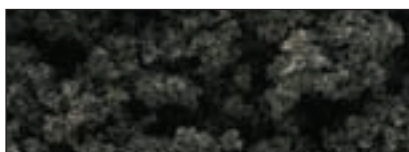
**Light Green**  
FC682 (Small Bag)  
FC182 (Large Bag)



**Medium Green**  
FC683 (Small Bag)  
FC183 (Large Bag)



**Dark Green**  
FC684 (Small Bag)  
FC184 (Large Bag)



**Conifer Green**  
FC185 (Large Bag)

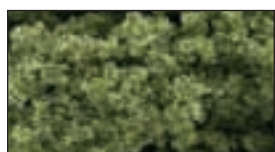


**Fall Mix**  
FC186 (Large Bag)

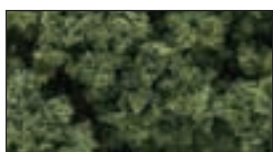
## Foliage Clusters\*

Foliage Clusters can be broken into any size and used to model bushes, shrubs and trees or high ground cover. Use on hillsides to model tree masses. Attach to layout with Scenic Glue.

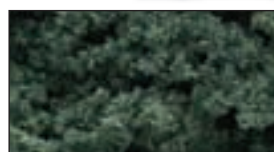
Bag 45 cu. in.



**Light Green**



**Medium Green**



**Dark Green**



particle approx. 1 1/2"-3"

## Landscaping Steps

Refer to page 5 for the Landscaping Learning Kit (LK954).



1. Paint layout (or model) with Earth Colors and spray with Scenic Cement.



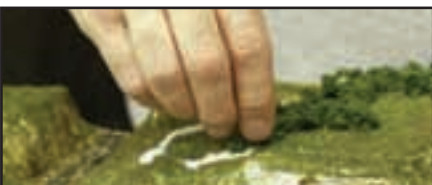
2. Sprinkle on a base layer of Blended Turf.



3. Lightly spray with Scenic Cement to fix in place.



4. Add more color and texture with Fine and Coarse Turf in various colors and sizes.



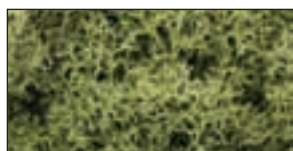
5. Use Scenic Glue to attach Underbrush, Bushes, Clump-Foliage and Foliage Clusters.



6. Allow to dry thoroughly and spray again with Scenic Cement to fix in place.

## Lichen

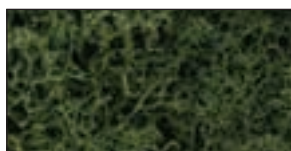
A longtime favorite of hobbyists, this natural product, with its unique texture, blends easily with other foliage creating realistic scenery. Lichen models bushes and ground cover, or can be used as tree foliage. It is available in five solid colors and three mixes, designed to blend with our other landscaping products. Use Lichen for quick and economical tree masses on your layout. Attach to Tree Armatures with Hob-e-Tac®. Use Scenic Glue to attach to layout. *Small Bag 82 cu. in. (1.5 qt.)/Large Bag 165 cu. in. (3 qt.)*



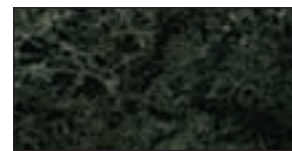
**Spring Green**  
L161 (Small Bag)



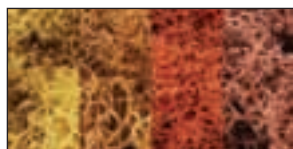
**Light Green**  
L162 (Small Bag)



**Medium Green**  
L163 (Small Bag)



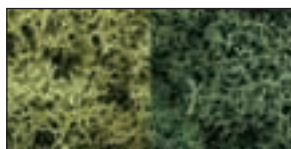
**Dark Green**  
L164 (Small Bag)



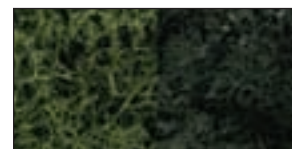
**Autumn Mix**  
L165 (Small Bag)



**Natural**  
L166 (Small Bag)



**Light Green Mix**  
L167 (Large Bag)



**Dark Green Mix**  
L168 (Large Bag)



1. Select a piece of Lichen in the desired shape and size.



2. Spray with Scenic Cement.



3. Lightly sprinkle on Fine or Coarse Turf to add realistic color and texture.

## Field Grass

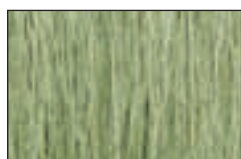
Field Grass is an extremely fine, natural hair product that models tall grass, field grass and weeds. Four realistic colors. Attach with Hob-e-Tac® or Scenic Glue. *8 gr.*



**Natural Straw**  
FG171



**Harvest Gold**  
FG172



**Light Green**  
FG173



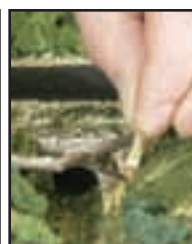
**Medium Green**  
FG174



1. Cut Field Grass.



2. Dip into Hob-e-Tac® or Scenic Glue.



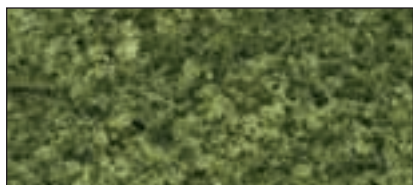
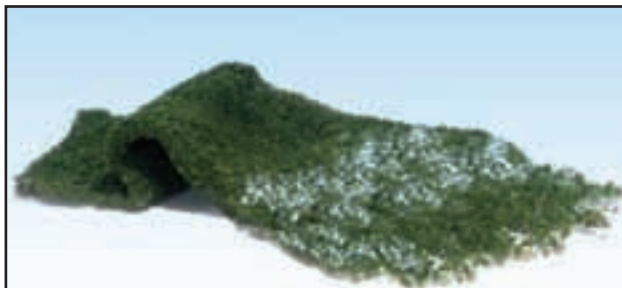
3. Place on layout.

4. Dry thoroughly.



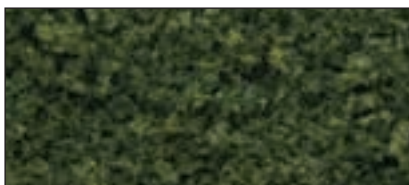
## Foliage

Foliage is excellent for making trees, vines, weeds, bushes or any low growth. Simply stretch the sheet of Foliage for a thin, lacy application. Attach Foliage with Scenic Cement. Create quick and economical tree masses on your layout. Stretch Foliage to desired density, then roll into a loose ball. Stretch the ball into a conical shape for variation. Attach to hill-sides with Scenic Glue. Foliage is available in four colors and two fall blends. 60 sq. in.



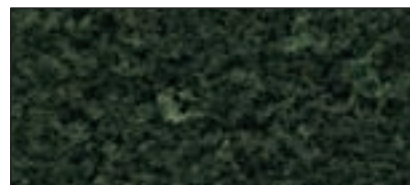
**Light Green**

F51



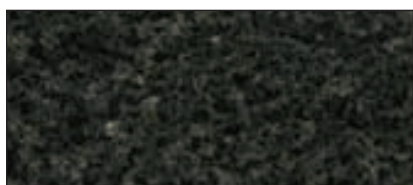
**Medium Green**

F52



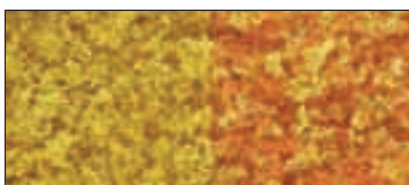
**Dark Green**

F53



**Conifer Green**

F54



**Early Fall**

F55



**Late Fall**

F56



1. Stretch and tear Foliage until thin and lacy.



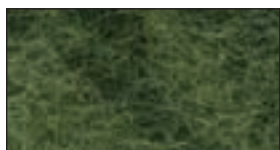
2. Attach to Tree Armatures.



3. Attach to Tunnel Portals, buildings and bridges.

## Poly Fiber FP178

Poly Fiber is synthetic fiber used to create vines, undergrowth and other rambling vegetation. Apply it on the sides of buildings, Tunnel Portals, light poles, billboards and along fence rows, or other places you see vines grow. Use Poly Fiber after you have added ground covers and set buildings on your layout. Great for quick and economical tree masses on your layout. Attach to layout with Scenic Cement. 16 gr.



**Green**





## Fine-Leaf Foliage\*

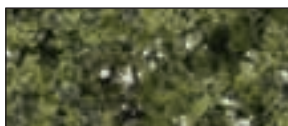
Fine-Leaf Foliage is great for modeling bushes, saplings, shrubs, hedges and makes exquisite trees. Every piece of the product can be used. The fine-leaf detail is superb and adds a new dimension to any layout. A Tree Armature is included in each package. Attach to Tree Armatures with Hob-e-Tac®. Use Scenic Glue to attach to layout. Sizes vary from 1/2" to 8".

75 cu. in.



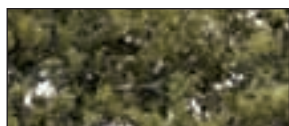
**Dark Green**

F1130



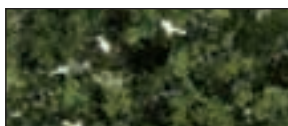
**Medium Green**

F1131



**Light Green**

F1132



**Olive Green**

F1133



**Dead Foliage**

F1134



**Fall Mix**

F1135



1. Strip, cut or break Fine-Leaf Foliage from branches.



2. Attach to Tree Armatures with Hob-e-Tac®.



## Tree Armatures

Tree Armatures are bendable plastic and retain their shape once twisted. They have the texture and color of real trunks and a base pin for planting. Sizes vary from 3/4" to 7". Use Hob-e-Tac® to attach foliage.



1. Bend and twist Tree Armature into a three-dimensional shape.



2. Apply Hob-e-Tac® to the branches. Let dry until clear and tacky.



3. Dip Tree Armature into foliage.



4. Poke a hole in layout, put in a drop of Scenic Glue and plant tree.

### TREE ARMATURES

Deciduous	QTY.	N SCALE	HO SCALE	O SCALE	ITEM #
3/4" - 2" Armatures	114/pkg	10'-27'	5'-15'	3'-8'	TR1120
2" - 3" Armatures	57/pkg	27'-40'	15'-22'	8'-12'	TR1121
3" - 5" Armatures	28/pkg	40'-67'	22'-36'	12'-20'	TR1122
5" - 7" Armatures	12/pkg	67'-94'	36'-51'	20'-28'	TR1123
<b>Pine</b>					
2 1/2" - 4" Armatures	70/pkg	33'-53'	18'-29'	10'-16'	TR1124
4" - 6" Armatures	44/pkg	53'-80'	29'-44'	16'-24'	TR1125

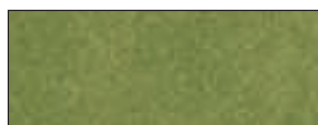


# READYGRASS™

## VINYL MAT

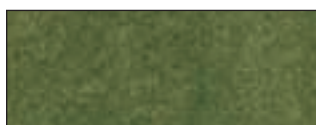
- **Moldable and retains its shape...**for making hills
- **Removable Turf...**for making roads and water areas
- **Durable/tear resistant...**use again and again
- **Non-shedding/non-staining...**no mess
- **Colorfast...**no fading

ReadyGrass™ Vinyl Mats are high-quality grass mats that are great to use as is or mounted to plywood. They can be used for model railroading, school projects, arts and crafts, gaming, military dioramas, architectural models, collectible houses, slot cars and much more. Available in two Roll sizes – Large (50 x 100-inch) and Small (33 x 50-inch) – and Project Sheets (12 1/2 x 14 1/8-inch). All are available in four fade-resistant colors.



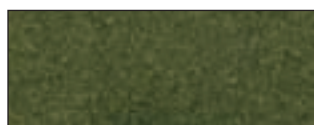
**Spring Grass**

<b>Large Roll</b>	RG5121
<b>Small Roll</b>	RG5131
<b>Project Sheet</b>	RG5141



**Green Grass**

<b>Large Roll</b>	RG5122
<b>Small Roll</b>	RG5132
<b>Project Sheet</b>	RG5142



**Forest Grass**

<b>Large Roll</b>	RG5123
<b>Small Roll</b>	RG5133
<b>Project Sheet</b>	RG5143



**Summer Grass**

<b>Large Roll</b>	RG5124
<b>Small Roll</b>	RG5134
<b>Project Sheet</b>	RG5144



**Model  
Railroading**

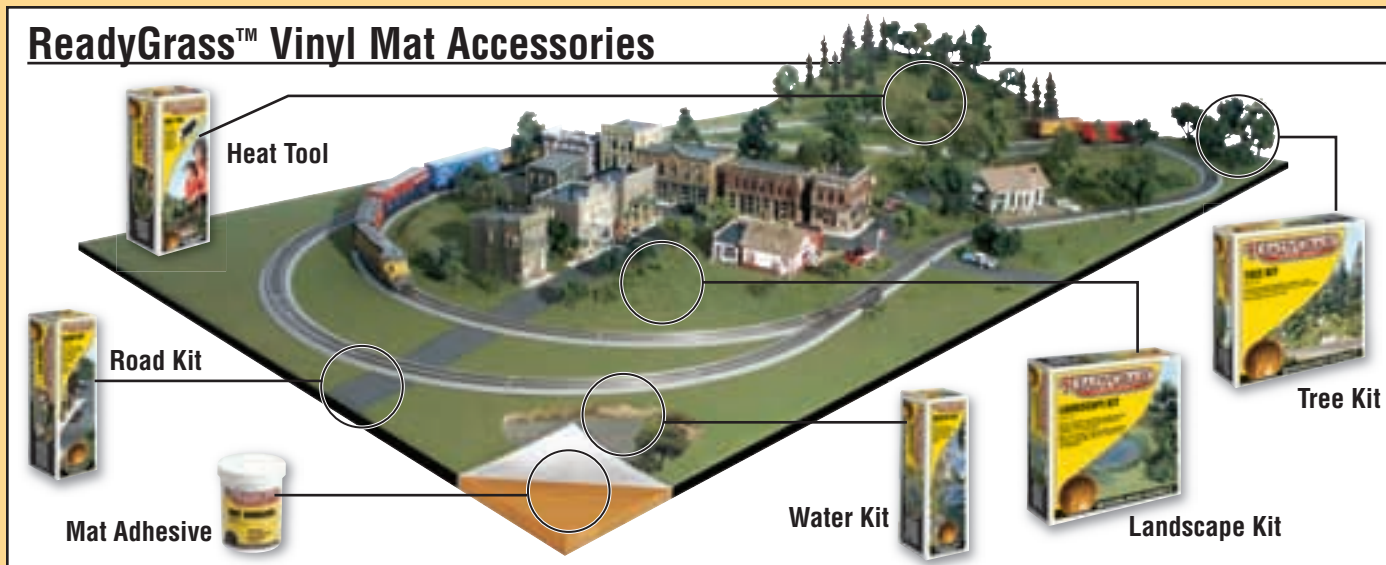


**Mobile  
Gaming Mats**



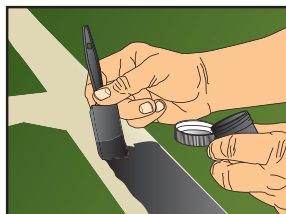
**Collectible  
Houses**

## ReadyGrass™ Vinyl Mat Accessories

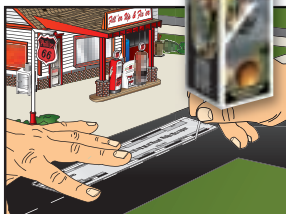


### Road Kit RG5151

This kit includes everything needed to create and detail roads, sidewalks and parking areas.



1. Wet area for road/parking areas. Remove turf with scraper, then paint.



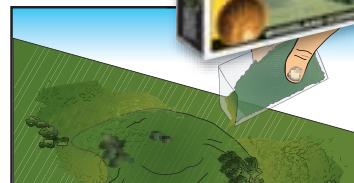
2. Detail road/parking areas with Striping Pin.

### Landscape Kit RG5152

This kit includes everything needed (various foliage, bushes, shrubs and adhesive) to enhance a 4 x 8-foot area. Add paths, different colors of turf and high-lights. Refer to page 20 for Landscaping Steps.



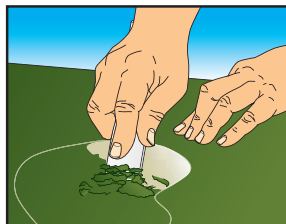
1. Spray adhesive on area to be landscaped.



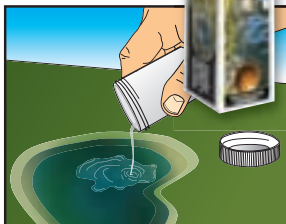
2. Add bushes and shrubs. Blend and add low ground cover.

### Water Kit RG5153

This kit includes everything needed to create streams, rivers, ponds and lakes.



1. Wet water area. Remove turf with scraper, then paint.



2. Pour or brush on Realistic Water.

### Tree Kit RG5154

This kit includes everything needed to make 27 deciduous and pine trees for a 4 x 8-foot area. Sizes range from 2 to 6-inches. Refer to page 23 for Tree-Making Steps.



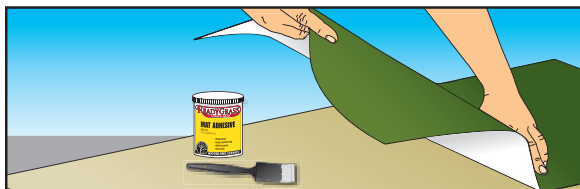
1. Twist armature into tree shape. Apply adhesive and dip in foliage.



2. Plant trees on layout.

### Mat Adhesive RG5161

Use Mat Adhesive for permanently bonding mats to any clean, smooth surface. Great for mounting puzzles and posters to art board. 7 fl. oz.



1. Apply Mat Adhesive to back of grass mat. Press onto surface.

### Heat Tool RG5162

Use with ReadyGrass™ Vinyl Mats to form hills and mounds.

#### International Heat Tools

**230V Heat Tool** ..... RG5163  
(Transformer/Plug Europe)

**240V Heat Tool** ..... RG5164  
(Transformer/Plug UK)

**230V or 240V Heat Tool** .. RG5165  
(Transformer/Plug Australia/New Zealand)



1. Form hills over newspaper wads with Heat Tool.





## Flowering Foliage

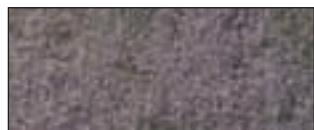
Use Flowering Foliage to model flowers along railroad tracks, in fields, on hills or around buildings to add color. Place on the layout and attach with Scenic Cement.

Covers 100 sq. in.



**Yellow**

F176



**Purple**

F177



## Fruit and Flowers

Sprinkle Fruit on small trees to model apple and orange trees in an orchard. Flowers are sprinkled on small bushes, shrubs, vines and fields to model flowering plants. Spray with Scenic Cement to affix to foliage.

1 1/2 cu. in. per pkg.



**Fruit** T47 (Apples and Oranges)

**Flowers** T48 (4 colors: red, yellow, white and orange)



## Dead Fall S30

Dead Fall is a natural, realistic product, which has the look of aged wood and is used to model fallen or standing dead trees and stumps. This assortment of wooden pieces can be used on any scale layout. Pieces feature gnarled branches, knots and some are smooth, with signs of weathering. Apply with Scenic Glue.

.5 oz.



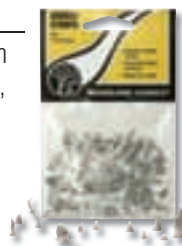
## Stumps

Add realistic detail to wooded or deforested areas on your layout with Cut or Broken Stumps. Clean parts, paint and adhere to layout with Scenic Glue.

14 pcs. per package

**Cut Stumps** S31

**Broken Stumps** S32



## Soft Flake Snow SN140

This product is used on model railroads, dioramas, military models or where collectible buildings are displayed. For a dusting of snow, sprinkle Snow and attach with Scenic Cement. For heavy drifts, apply Flex Paste (C1205, page 9) to your layout and sprinkle Snow on top.

50 cu. in.







### Realistic Water C1211

No mixing is required. Realistic Water pours directly from the bottle, is self-leveling and models lakes, ponds, rivers and more. It stays flexible and is water-soluble. Pour no more than 1/8" deep at a time and allow to dry thoroughly between layers. It dries clear in approximately 24 hours. The contents cover a 17" diameter area when poured to recommended depth of 1/8". 16 fl. oz.

Refer to page 5 for the River/Waterfall Learning Kit (LK955).



### Water Effects C1212

Water Effects is a heavy-bodied product, which is moldable and will hold its shape. Create pond ripples, waterfalls or rapidly moving water. It dries clear in about 24 hours.

8 fl. oz.

Refer to page 5 for the River/Waterfall Learning Kit (LK955).



1. Apply Water Effects onto a non-stick surface.



2. Shape and texture with a toothpick to create desired effect.



3. When dry, peel off and place on layout.



4. Attach with Water Effects.

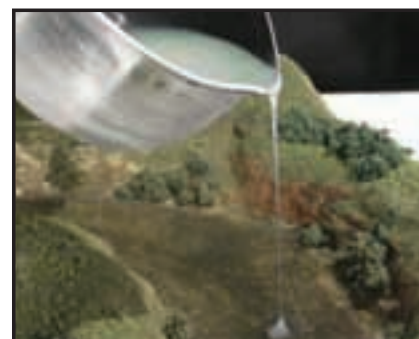
### E-Z Water C1206

E-Z Water is a heat-activated product used for modeling various bodies of water. It dries quickly, but can be re-heated with a heat gun to remove scratches or to mold various accents, such as ripples, waves and rapids. Recommended for small areas.

28 cu. in.



1. Melt E-Z Water pellets over medium heat.



2. Pour into prepared areas.



# Ballast

Ballast is the rock used to hold real railroad ties in place. Our Ballast is great for modeling this effect and making gravel roads on your layout. It is available in several colors and sizes. Mix and match for a realistic effect. The product is lightweight and easy to use. Attach with Scenic Cement.

Bags 18 cu. in. and 45 cu. in. (Gray Blend only)/Shaker 50 cu. in.



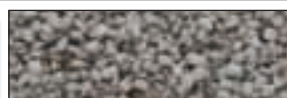
## GRADES Shown actual size



Fine



Medium



Coarse

## COLORS



Iron Ore

Fine B70 (Bag)

Med. B77 (Bag)

Coarse B84 (Bag)



Dark Brown

Fine B71 (Bag)

Med. B78 (Bag)

Coarse B85 (Bag)



Brown

Fine B72 (Bag)

B1372 (Shaker)

Med. B79 (Bag)

B1379 (Shaker)

Coarse B86 (Bag)

B1386 (Shaker)



Buff

Fine B73 (Bag)

B1373 (Shaker)

Med. B80 (Bag)

B1380 (Shaker)

Coarse B87 (Bag)

B1387 (Shaker)



Light Gray

Fine B74 (Bag)

B1374 (Shaker)

Med. B81 (Bag)

B1381 (Shaker)

Coarse B88 (Bag)

B1388 (Shaker)



Gray

Fine B75 (Bag)

B1375 (Shaker)

Med. B82 (Bag)

B1382 (Shaker)

Coarse B89 (Bag)

B1389 (Shaker)



Cinders

Fine B76 (Bag)

B1376 (Shaker)

Med. B83 (Bag)

B1383 (Shaker)

Coarse B90 (Bag)

B1390 (Shaker)



Gray Blend

Fine B1393 (Shaker)

Med. B94 (Bag, 45 cu. in.)

B1394 (Shaker)

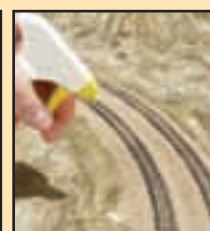
Coarse B1395 (Shaker)

## SCALE REFERENCE CHART: BALLAST

SCALE	FINE	MEDIUM	COARSE
Z	2.2"-7.3"	7.3"-11"	11"-18.3"
N	1.6"-5.3"	5.3"-8"	8"-13.3"
HO	.9"-2.9"	2.9"-4.3"	4.4"-7.2"
S	.6"-2.1"	2.1"-3.2"	3.2"-5.3"
O	.5"-1.6"	1.6"-2.4"	2.4"-3.9"
1	.3"-1"	1.1"-1.6"	1.6"-2.6"
G	.24"-.8"	.8"-1.2"	1.2"-1.9"



1. Pour Ballast down the center of the track. Spread with a dry paintbrush. Brush Ballast off ties and rails.



2. Apply Scenic Cement with an eye-dropper or gently spray. Clean rails thoroughly.

# Coal

Use Coal in piles or in wagons and freight cars to model realistic-looking coal.

9 cu. in.



Mine Run

B92



Lump

B93



## SCALE REFERENCE CHART: COAL

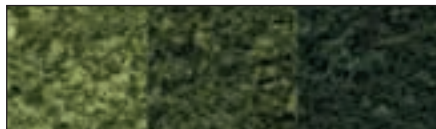
SCALE	N	HO	O
B92	0"-12"	0"-6"	0"-3"
B93	8"-20"	4"-10"	2"-5"

## Ready Made Trees Value Pack\*

No assembly is required! These Value Packs contain Ready Made deciduous or pine trees ranging in size from 3/4" to 8". They are the quickest, most economical way to add trees to a landscape. Attach to layout with Hob-e-Tac® or Scenic Glue.



**NO  
ASSEMBLY  
REQUIRED!**



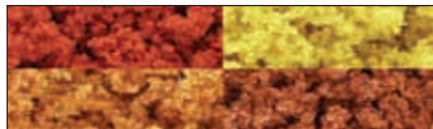
### Mixed Green Colors

Light, Medium and Dark Green



**3/4" - 2" (38/pkg)**  
TR1570

**N SCALE:** 10' - 27'  
**HO SCALE:** 5' - 15'  
**O SCALE:** 3' - 8'



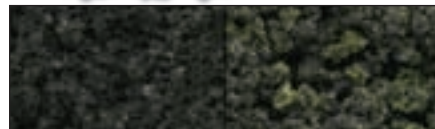
### Fall Colors

Red, Yellow, Orange and Rust



**3/4" - 2" (38/pkg)**  
TR1575

**N SCALE:** 10' - 27'  
**HO SCALE:** 5' - 15'  
**O SCALE:** 3' - 8'



### Conifer Colors

Conifer Green and Conifer Blend



**2 1/2" - 4" (33/pkg)**  
TR1580

**N SCALE:** 33' - 53'  
**HO SCALE:** 18' - 29'  
**O SCALE:** 10' - 16'



**2" - 3" (23/pkg)**  
TR1571

**N SCALE:** 27' - 40'  
**HO SCALE:** 15' - 22'  
**O SCALE:** 8' - 12'



**2" - 3" (23/pkg)**  
TR1576

**N SCALE:** 27' - 40'  
**HO SCALE:** 15' - 22'  
**O SCALE:** 8' - 12'



**4" - 6" (24/pkg)**  
TR1581

**N SCALE:** 53' - 80'  
**HO SCALE:** 29' - 44'  
**O SCALE:** 16' - 24'



**3" - 5" (14/pkg)**  
TR1572

**N SCALE:** 40' - 67'  
**HO SCALE:** 22' - 36'  
**O SCALE:** 12' - 20'



**3" - 5" (14/pkg)**  
TR1577

**N SCALE:** 40' - 67'  
**HO SCALE:** 22' - 36'  
**O SCALE:** 15' - 20'



**6" - 8" (12/pkg)**  
TR1582

**HO SCALE:** 44' - 58'  
**O SCALE:** 24' - 32'

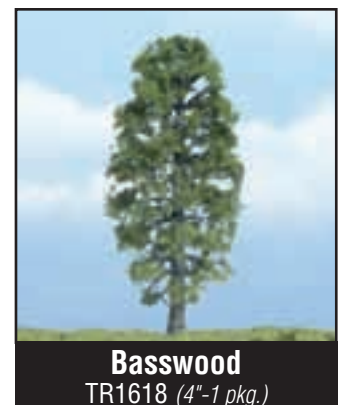
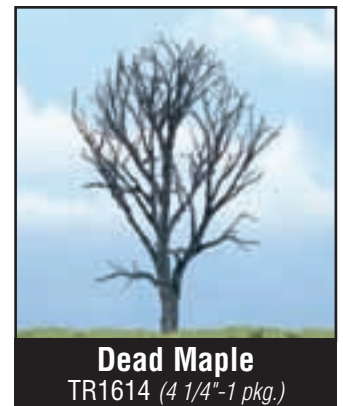
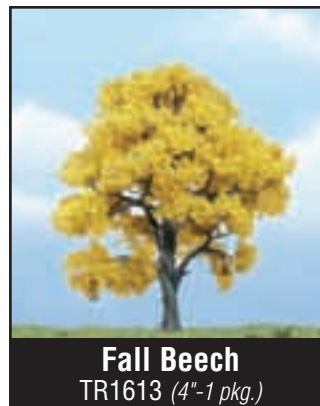
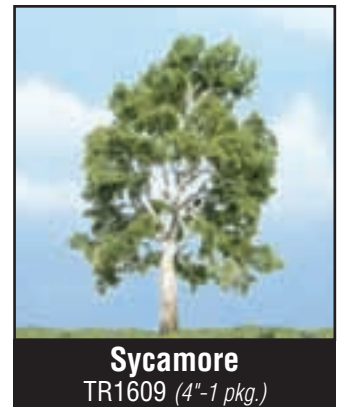




## Premium Trees

These Premium Trees are works of art that replicate real trees. Each tree is hand-crafted. The design of the branch and leaf structure easily identifies the tree type. The tree trunks are textured to look like real bark. Each tree has a planting pin. There are three different package sizes with trees ranging from 1 1/2" to 5 3/4". All heights are approximate.

**NO  
ASSEMBLY  
REQUIRED!**





**Birch**  
TR1601 (4"-1 pkg.)



**Dead Elm**  
TR1602 (3 1/4", 2 1/4"-2 pkg.)



**Sycamore**  
TR1603 (3", 2 1/4"-2 pkg.)



**Fall Maple**  
TR1604 (3", 2 1/2"-2 pkg.)



**Paper Birch**  
TR1605 (3", 1 1/2", 2"-3 pkg.)



**Oak**  
TR1606 (3 1/4"-1 pkg.)



**Locust**  
TR1607 (3", 2"-2 pkg.)



**Aspen**  
TR1612 (3", 2"-2 pkg.)



**Juniper**  
TR1619 (5 1/4", 2 1/2", 3"-3 pkg.)



**Oak**  
TR1620 (5"-1 pkg.)



**Spruce**  
TR1621 (5", 4"-2 pkg.)



**Walnut**  
TR1622 (4"-1 pkg.)



**Hickory**  
TR1623 (5 3/4"-1 pkg.)



**Pine**  
TR1624 (5 1/4", 4"-2 pkg.)





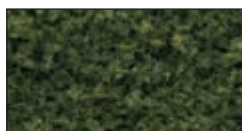
## Ready Made Realistic Trees\*

These trees lend authenticity to any layout or diorama. Their natural colors and realistic textures blend with other Woodland Scenics® landscaping products. Plant trees in clusters and intermix foliage colors. For more detail, spray foliage with Scenic Cement and highlight with Fine Turf. Attach to layout with Hob-e-Tac® or Scenic Glue.

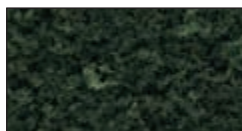
**NO  
ASSEMBLY  
REQUIRED!**



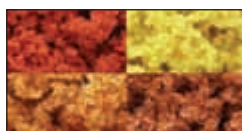
**Light Green**



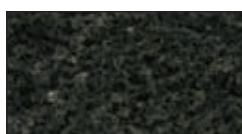
**Medium Green**



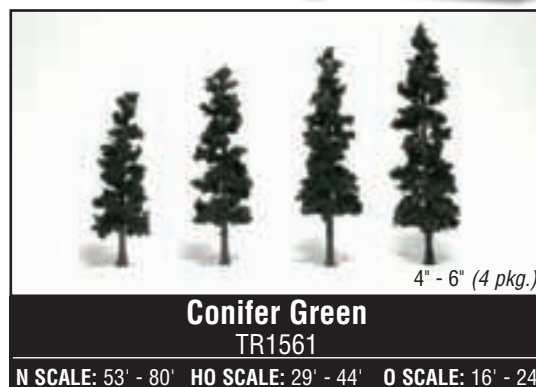
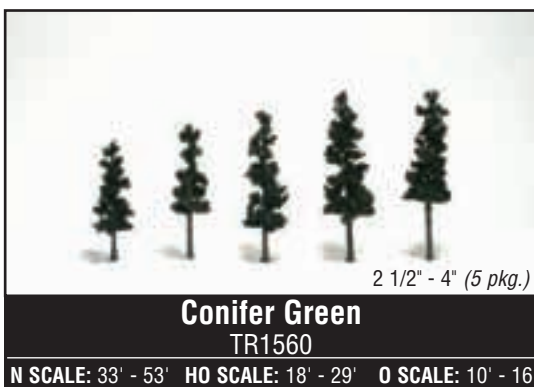
**Dark Green**

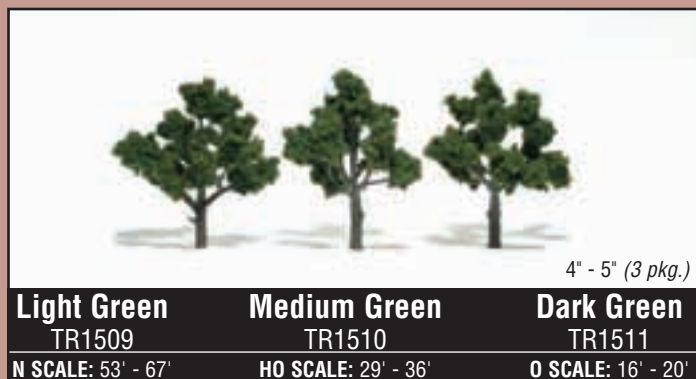
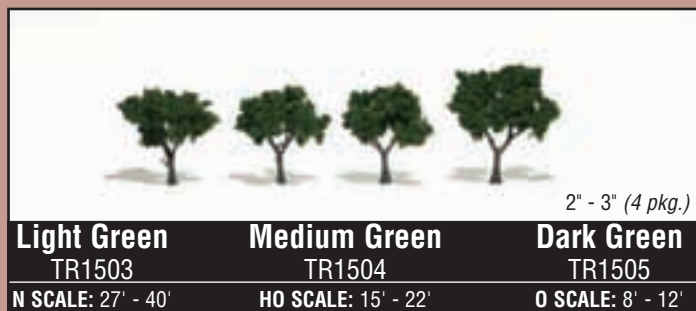
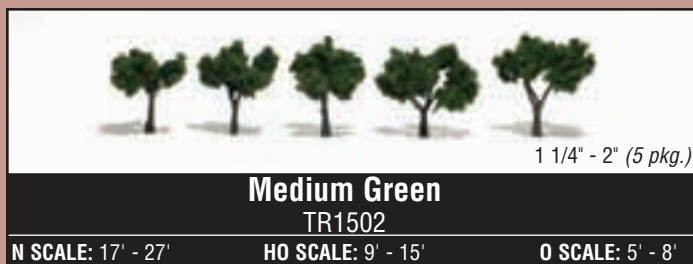


**Fall Mix**



**Conifer Green**







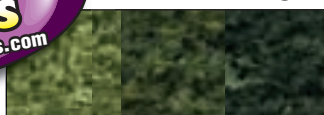


## Realistic Tree Kits\*

The difference between a good layout and a great one is trees: in different sizes, shapes, textures and colors. Our deciduous and pine Realistic Tree Kits include Tree Armatures with bases and foliage materials. Packages TR1101-TR1103 include a mix of three different colors. They offer tremendous variation and are economically priced. A bonus Fine-Leaf Foliage sample is included in TR1111 and TR1112. Use Hob-e-Tac® to attach foliage to Tree Armatures.



### DECIDUOUS COLOR



Light, Medium and  
Dark Green



Medium  
Green

### PINE COLOR



Conifer Green



Forest Green



### REALISTIC TREE KITS

Deciduous	COLOR	QTY.	N SCALE	HO SCALE	O SCALE	ITEM #
¾"-3"	Light, Medium, Dark Green	36/pkg	10'-40'	5'-22'	3'-12'	TR1101
3"-5"	Light, Medium, Dark Green	14/pkg	40'-67'	22'-36'	12'-20'	TR1102
5"-7"	Light, Medium, Dark Green	7/pkg	67'-94'	36'-51'	20'-28'	TR1103
¾"-3"	Medium Green	21/pkg	10'-40'	5'-22'	3'-12'	TR1111
3"-7"	Medium Green	6/pkg	40'-94'	22'-51'	12'-28'	TR1112
Pines	COLOR	QTY.	N SCALE	HO SCALE	O SCALE	ITEM #
2 ¼"-4"	Conifer Green	42/pkg	33'-53'	18'-29'	10'-16'	TR1104
4"-6"	Conifer Green	24/pkg	53'-80'	29'-44'	16'-24'	TR1105
6"-8"	Conifer Green	16/pkg		44'-58'	24'-32'	TR1106
2 ½"-6"	Forest Green	24/pkg	33'-80'	18'-44'	10'-24'	TR1113

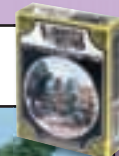
## Tree Kits

These are highly-detailed, extremely versatile trees, designed to lend realism and variety to any layout. Use Hob-e-Tac® or Scenic Glue to attach the pre-colored, non-metallic foliage to the bendable metal armatures. Lightly spray with Scenic Cement to add Fine or Coarse Turf accent colors, Fruit or Flowers.



### Small Tree Kits

Each tree kit contains two to five bendable metal armatures. There are ten different kits available including deciduous, pine and dead trees.



**Forked Tree** TK11  
2 1/4" (4/kit)



**Ornamental** TK12  
2 1/2" (5/kit)



**Straight Trunk** TK13  
2 1/2" (5/kit)



**Softwood Pine** TK14  
2 3/4" (5/kit)



**Shag Bark** TK17  
3 1/2" (3/kit)



**Double Forked** TK18  
3 1/2" (2/kit)



**Shade Tree** TK19  
4" (2/kit)



**Columnar Pine** TK20  
4 1/2" (4/kit)



**Gnarled** TK21  
4 1/2" (2/kit)



**Dead Trees** TK22  
(5/kit)

### Large Tree Kits

These bendable metal tree kits take tree-making to new heights! The Hedge Row Scene allows you to recreate Mother Nature at her best.



**Pine Tree** TK23  
6" - 9" (5/kit)



**Hedge Row Scene** TK24  
24" - 30" (18 trees and 6 bushes/kit)



**Hardwood Trees** TK25  
5 1/2" - 6 1/2" (3/kit)



**Big Old Trees** TK26  
7" - 7 1/2" (2/kit)

### Pine and Hardwood Forest Kits

The Pine and Hardwood Forest bendable metal tree kits are the most economical trees. The cost (per tree) of these kits is so inexpensive you can afford to create entire forest areas.



**Pine Forest** TK27  
2" - 4" (24/kit)



**Hardwood Forest** TK28  
2" - 4" (24/kit)





*Accident Waiting to Happen (A1893 and A2171) see page 40.*

## Scenic Accents®

This collection of N, HO, O and G scale figures, animals and accessories have been sculpted with detail and are hand-painted. Each piece exudes personality created by the craftsman, and is a work of art at an affordable price. Their natural charm will steal the show. To attach, apply Scenic Accents® Glue and set in place with Gentle Grips® (page 46).



### Pedestrians\*

HO - A1821 N - A2121



### Professionals

HO - A1835 N - A2135



### General Public

HO - A1837 N - A2149 O - A2730



### Ordinary People\*

HO - A1824 N - A2124



### Casual People\*

HO - A1874 N - A2168



### Bystanders\*

HO - A1872 N - A2156 O - A2732



### Uniformed Travelers

HO - A1892



### Travelers\*

HO - A1840 N - A2155



### Commuters\*

HO - A1839 N - A2150



**People Talking**

HO - A1838



**Window Shoppers**

HO - A1825 N - A2125



**Rebels\***

HO - A1849 N - A2136



**Bicycle Buddies**

HO - A1904 N - **A2194**



**Checker Players**

HO - A1848 N - A2132 O - A2727



**Game of Horseshoes**

HO - A1880 N - A2165



**Baseball Players I**

HO - A1869 N - A2145



**Baseball Players II**

HO - A1870 N - A2146



**Youth Football Players**

HO - A1895 N - A2169



**Spectators**

HO - A1881 N - A2172



**Kids at Play**

HO - A1830



**Sun Bathers**

HO - A1853



**Recreational People**

HO - A1846



**Active People**

HO - A1831



**Jug Band**

HO - A1902 N - **A2180**



**Tourists**

HO - A1836



**Lovers**

HO - A1833 N - A2133



**Full Figured Folks**

HO - A1845 N - A2130 O - A2728



*Snowball Fight (A1894 and A2183) and Ice Skaters (A1899 and A2184) see page 41.*





**Farm People**

HO - A1857 N - A2152



**Beekeepers**

HO - A1897 N - A2178



*Picket Line (A1920) see page 42.*



**Farmers Market**

HO - A1896 N - **A2170**



**Dairy Farmers**

HO - A1887 N - A2166



**Holstein Cows**

HO - A1863 N - A2187 O - A2724



**Hereford Cows**

HO - A1843 N - A2144



**Horseback Riders**

HO - A1889 N - A2159



**Chestnut Horses**

HO - A1842



**Farm Horses**

HO - A1862 N - A2141



**Livestock**

HO - A1844



**Farm Animals**

HO - A1888 N - A2142



**Hampshire Pigs**

HO - A1864 N - A2139



**People & Pesky Raccoons**

HO - A1875 N - A2158



**Engineers\***

HO - A1866 N - A2153 O - A2733



**Train Mechanics**

HO - A1859 N - A2147 O - A2721



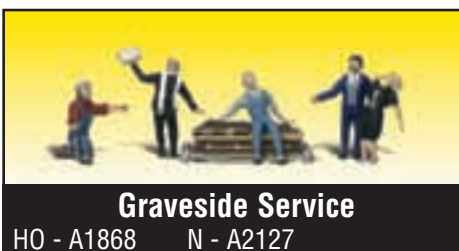
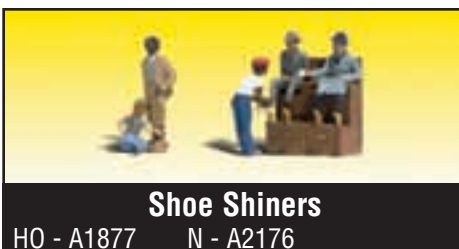
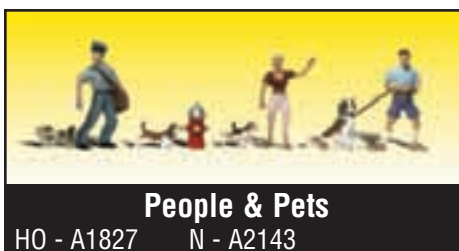
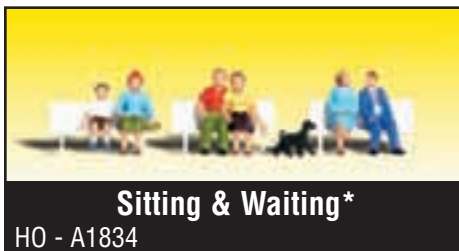
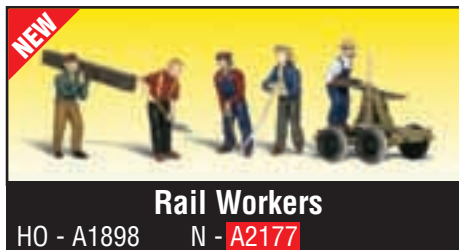
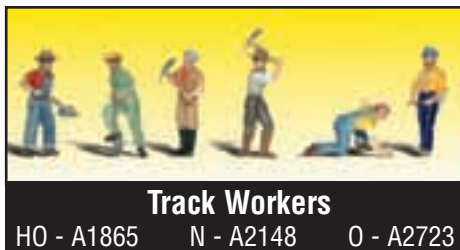
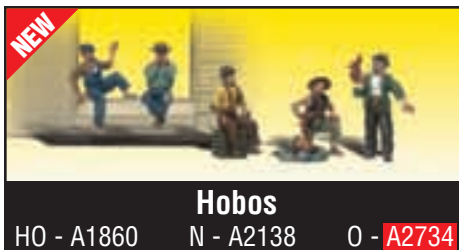
**Train Personnel**

HO - A1847 N - A2131 O - A2722



**Passengers\***

HO - A1873 N - A2190 O - A2731







**Tombstones**

HO - A1856 N - A2164 O - A2726



**Gone Fishing\***

HO - A1878 N - A2179



**Rabbit Hunt**

HO - A1903



**Deer**

HO - A1884 N - A2185 O - A2738



**Black Bears**

HO - A1885 N - A2186 O - A2737



**Lumberjacks**

HO - A1876 N - A2160 O - A2735



**Surveyors**

HO - A1883 N - A2175 O A2741



**City Workers**

HO - A1826 N - A2126



**Painters**

HO - A1890 N - A2174



**Welders & Accessories**

HO - A1871 N - A2157



**Accident Waiting to Happen**

HO - A1893 N - A2171



**Roofers**

HO - A1828 N - A2128



*Canoers (A1918) see page 42.*



**Road Crew**

HO - A1850 N - A2137



**Road Crew Details**

HO - A1851



**Dock Workers**

HO - A1823 N - A2123 O - A2729



### Assorted Skids

HO - A1854 N - A2161



### Assorted Crates

HO - A1855 N - A2162 O - A2739



### Masonry Workers

HO - A1901 N - A2173



### Factory Workers

HO - A1867 N - A2154



### 2nd Shift Workers

HO - A1886 N - A2188



### Snowball Fight

HO - A1894 N - A2183



### Ice Skaters

HO - A1899 N - A2184



### Couples in Coats

HO - A1900 N - A2189



### Dog Wash

HO - A1905 N - A2195



### Newsstand

HO - A1906 N - A2191 O - A2740



### Golfers

HO - A1907



### Sixteen Passengers

HO - A1908



### Depot Workers & Accessories

HO - A1909



### Fly Fishermen

HO - A1910



### Workers with Forklift

HO - A1911 N - A2192



### Goodbye People

HO - A1912 N - A2193



### People Walking

HO - A1913



### Auto Mechanics

HO - A1914

Painters (A1890 and A2174) see page 40.





**Lawn Workers**

HO - A1915



**Park Bums**

HO - A1916 N - A2196



**Campers**

HO - A1917



**Canoers**

HO - A1918



**Smoke Jumpers**

HO - A1919



**Picket Line**

HO - A1920



**Playtime**

HO - A1921



**Senior Citizens**

HO - A1922



**Family Fishing**

HO - A1923



**People on Benches**

HO - A1924



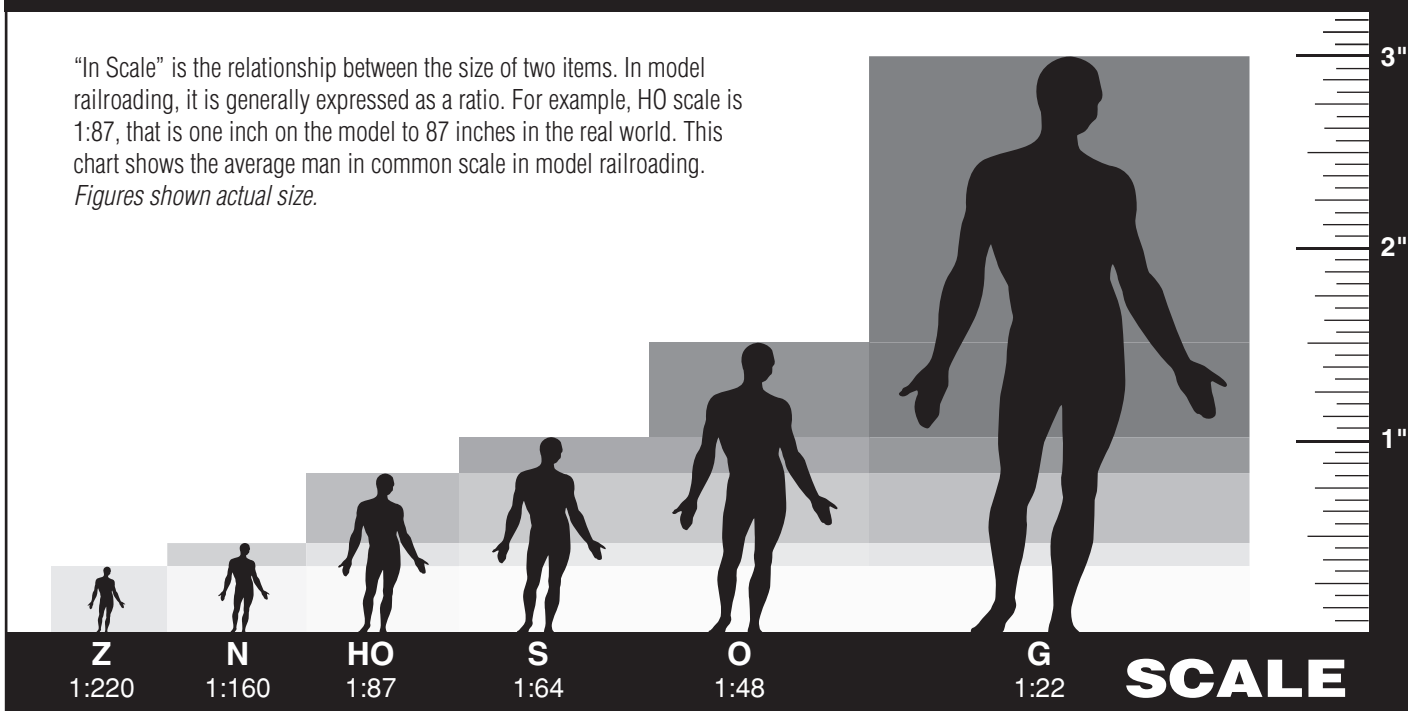
**Sermon on the Crate**

HO - A1925



## SCALE CHART

"In Scale" is the relationship between the size of two items. In model railroading, it is generally expressed as a ratio. For example, HO scale is 1:87, that is one inch on the model to 87 inches in the real world. This chart shows the average man in common scale in model railroading. *Figures shown actual size.*





*Clyde the Conductor (A2528), Paul Porter (A2527) and Tom Traveler (A2531) see this page.*



**Big Bobby, Bench and Buster**  
G - A2521



**The Checker Brothers and Hound**  
G - A2522



**Calvin P. Crate**  
G - A2523



**Rover and Felix**  
G - A2524



**Sam Supervisor**  
G - A2525



**Mike the Mechanic**  
G - A2526



**Paul Porter**  
G - A2527



**Clyde the Conductor**  
G - A2528



**Homeless Harry Hobo**  
G - A2529



**Hungry Henry Hobo**  
G - A2530



**Tom Traveler**  
G - A2531



**Officer Dunkin**  
G - A2532





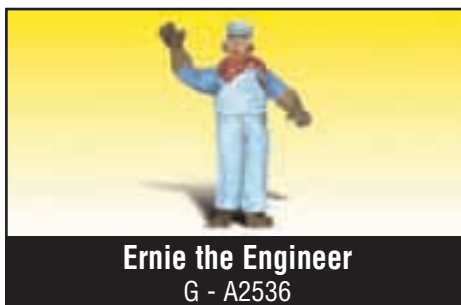
**Doug and Phil Shoveler**  
G - A2533



**Frank and Son Fishing**  
G - A2534



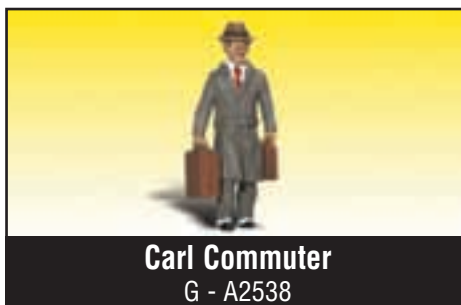
**The Sitting Seymores\***  
G - A2535



**Ernie the Engineer**  
G - A2536



**Peter Pipe Puffer**  
G - A2537



**Carl Commuter**  
G - A2538



**Fireman Bill and Betsy**  
G - A2539



**Earl and Eddie Engineer\***  
G - A2540



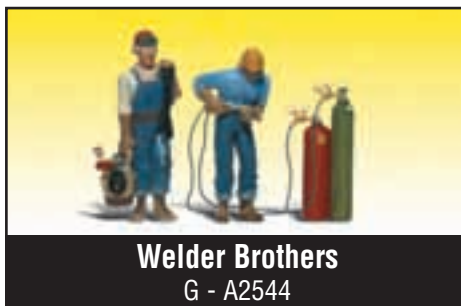
**Gus and Gertie Gardener**  
G - A2541



**Spike, Neil and Ty**  
G - A2542



**Buck and Family**  
G - A2543



**Welder Brothers**  
G - A2544



*Homeless Harry Hobo (A2529) and Hungry Henry Hobo (A2530) see page 43.  
The Bumm Brothers (A2548) see page 45.*



**Barney's Big Bust**  
G - A2545



**Pickin' and Grinnin'**  
G - A2546



**Idling Engineers**  
G - A2547



*Chip, Woody and Chopper (A2552) see this page.*



**The Bumm Brothers**  
G - A2548



**Three Train Mechanics**  
G - A2549



**Horse Shoein' Around**  
G - A2550



**Harry Bear and Family**  
G - A2551



**Chip, Woody and Chopper**  
G - A2552



**Milkin' Ol' Bessie**  
G - A2553



**Tombstones**  
G - A2554



**Dedicated Depot Workers**  
G - A2555



**Hilow Bros. Surveying Co.**  
G - A2556



## Scenic Accents® Economy Packs

Why not populate your layout with numerous people, animals and accessories...all at an affordable price? There are three different packages in either N or HO scale. Each package contains over 100 themed pieces. Just imagine, save over 30% from items purchased separately. Each package may vary in contents and include duplicates. There is a limited supply.



**Assorted Farm Set**  
HO - A2051 N - A2061



**Assorted Worker Set**  
HO - A2052 N - A2062



**Assorted Figure Set**  
HO - A2053 N - A2063



*Assorted Worker Set (A2052 and A2062) and Assorted Figure Set (A2053 and A2063) see this page.*

### Scenic Accents® Glue A198

This adhesive is specially formulated for attaching Scenic Accents® or other types of figures to a layout. Scenic Accents® Glue stays tacky and allows for repositioning, without having to reapply glue each time. Sand glue points and apply glue. Let dry until clear and tacky before placement. Place on layout. A brush applicator is included.

1.25 fl. oz.



### Gentle Grips® A200

This unique tweezer is used for positioning Scenic Accents® or any scale figures that fit in the tweezer head. The protective tips will not damage figures. Gentle Grips® come in a handy storage tube and feature non-slip grips.

6 inches







*Harrison's Hardware (BR5022) and Lubener's General Store (BR5021) see this page.*

## Built-&-Ready® Structures

These preassembled, hand-painted and fully detailed HO scale structures are great for building cities, towns and villages. Each is individually molded with high architectural detail. The superb see-through packaging allows visibility from all four sides.



**Clyde & Dale's Barrel Factory**  
BR5026 (6 5/8" w x 5 3/4" d x 4 1/8" h)



**Lubener's General Store**  
BR5021 (4 1/2" w x 3 3/4" d x 4 1/8" h)



**Harrison's Hardware**  
BR5022 (4 3/4" w x 3 3/4" d x 4 1/2" h)



**Dansbury Depot**  
BR5023 (7 1/2" w x 5 1/8" d x 4" h)



**Corner Emporium**  
BR5024 (4 1/8" w x 2 3/4" d x 4 1/8" h)



**Fill'er Up & Fix'er**  
BR5025 (6" w x 5 3/8" d x 2 5/8" h)





*Felix Fix-a-Flat (AS5523) see this page.*

## AutoScenes®

AutoScenes® have been finely crafted and custom painted to depict realism. They add life, color, interest and authenticity to any layout scene or diorama. Not just an automobile, but real figures and accessories that capture the '40s and '50s era. These are true 1:87 HO scale models.



**Hall & Duke**  
AS5521



**Billy Brown's Coupe**  
AS5522



**Felix Fix-a-Flat**  
AS5523



**Family Vacation**  
AS5525



**Lubeners Loading**  
AS5526



**Roger's Rag Top**  
AS5527



**Wayne Recker's Tow Service**  
AS5524



**Willie's Warning**  
AS5528



**Mickey's Milk Delivery**  
AS5529



**Spoonin'-N-Croonin'**  
AS5530



**Rusty's Regret**  
AS5531



**Suds & Shine**  
AS5533



**Pickem' Up Truck**  
AS5534



**Sunday Drive**  
AS5535



**Thompson's Travelin' Trailer**  
AS5532



**Cruisin' Coupes**  
AS5536



**Cop'n a Kiss**  
AS5537



**Henry's Haulin'**  
AS5538



**Peter's Painting**  
AS5539



**Getaway Gangsters**  
AS5540



**To The Lake**  
AS5544



**Ike's Ice Cream Truck**  
AS5541



**Ma & Pa's Trailer Haven**  
AS5542



**Shove It or Leave It**  
AS5543



## Mini-Scene®

To add humor and realism to your layout, create these delightful Mini-Scenes® in HO scale. Complete kits contain metal castings and landscaping materials. Assemble and then finish with our Pewter Patina or Paint Set. Miniature scene collectors will enjoy building and finishing these scenes.

*All scenes designed to fit in Glass Display Dome and Base.*



**Abandoned Log Cabin M101**



**Moonshine Still M102**



**The Windmill M103**



**The Hunter M104**



**The Sign Painter M105**



**The Tack Shed M106**



**Tommy's Treehouse M107**



**Outhouse Mischief M108**



**Ernie's Fruit Stand M109**



**Saturday Night Bath M110**



**Floyd's Barber Shop M111**



**Tractor Pit Stop M112**

### Mini-Scene® Paint Set M125

This paint is used for painting metal details. It includes 12 assorted colors: red, yellow, blue, black, gray, white, cream, tan, rust, yellow ocher, brown and pewter. Paint is non-toxic, non-flammable and water-soluble.



### Pewter Patina Finish M126

For a quality pewter finish on Mini-Scenes® use our Pewter Patina Finish. Easily applied by brushing on and wiping off high spots. Finish is non-toxic, non-flammable and water-soluble.



### Glass Display Dome and Base M127

For the ultimate display and protection, use our 3" diameter x 4¼" high glass display dome. Plastic base is ½" high.





*Ice House (D219), Pharmacy (D221), Daniels Outfitters (D220) and Doctor's Office and Shoe Repair (D224) see page 52. Rocky's Tavern (D238) see page 53. Flat Bed and Tractor (D244) see page 54.*

## Scenic Details®

These 47 kits are finely crafted HO scale reproductions. Use Scenic Details® anywhere on your layout. They fill in small empty spaces beside railroad tracks and add a great amount of detail to your layout with items like crates, barrels, skids, junk piles, tractors, small buildings, animals and more. Apply Scenic Details® after all of the landscaping has been finished, to ensure proper placement. Colorful Dry Transfer Decals are included in some of the kits. Scenic Details® are economical, easy to assemble and fun to paint. They add color, interest and authenticity to your layout. Attach to layout with Scenic Accents® Glue, Hob-e-Tac® or Scenic Glue.



**20 Tombstones**  
D201



**Trackside Junk**  
D202



**Crates-Barrels-Sacks**  
D203



**15 Assorted Skids**  
D204



**Assorted Junk Piles**  
D205



**Assorted Mailboxes**  
D206



**Disc and Tractor (1938-1946)**  
D207



**Seeder and Tractor (1938-1946)**  
D208





**Aermotor Windmill**  
D209



**Plow, Disc, Horse and Man**  
D210



**2 Tractors (1929-1938)**  
D211



**3 Fuel Stands**  
D212



**Smokehouse**  
D213



**3 Outhouses and Man**  
D214



**Chicken Coop**  
D215



**Tool Shed**  
D216



**Service Truck (1914 Diamond T)**  
D217



**Grain Truck (1914 Diamond T)**  
D218



**Ice House**  
D219



**Daniels Outfitters**  
D220



**Pharmacy**  
D221



**Ticket Office**  
D222



**Gas Station**  
D223



**Doctor's Office and  
Shoe Repair** D224



**Industrial Junk**  
D225



**Cats and Dogs**  
D226



**Bare Hunter**  
D227



*Service Truck (D217), with modifications, see page 52.*



**Motorcycles and Sidecar**  
D228



**Steam Engine and Hammer Mill**  
D229



**8 Vending Machines**  
D230



**Trackside Scale**  
D231



**Diesel Fuel Facility**  
D232



**Bulldozer**  
D233



**Motor Grader**  
D234



**Track-Type Loader**  
D235



**Gazebo**  
D236



**Backhoe - INSLEY Model "K"**  
D237



**Rocky's Tavern**  
D238



**Flag Depot**  
D239



**Tucker Brothers Machine Shop**  
D240



**Branch Line Water Tower**  
D241



**Tank Truck (Diamond T)**  
D242





**Flat Bed and Tractor (Diamond T)**  
D244



**Rural Sawmill**  
D243



**Hyster Logging Cruiser and Tractor** D246



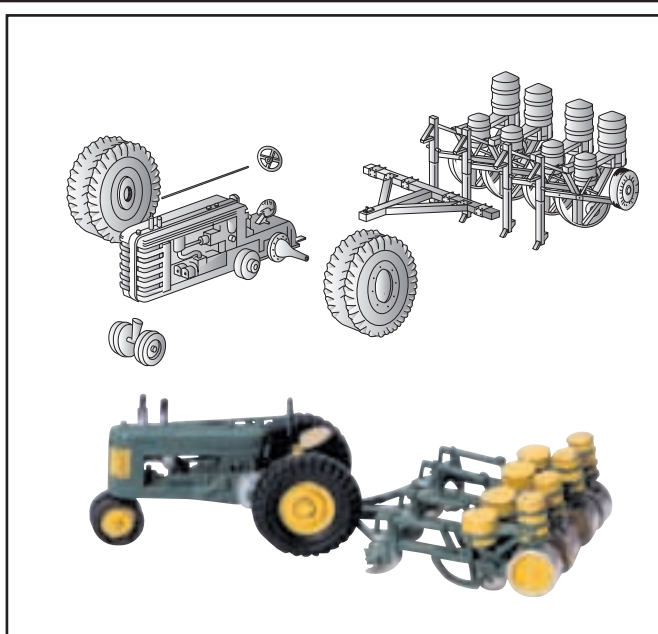
**Dump Truck (1 1/2 Ton Federal)**  
D247



**Street and Traffic Lights**  
D248



*Flat Bed and Tractor (D244) see this page. Pharmacy (D221), Doctor's Office and Shoe Repair (D224) see page 52.*



Scenic Details®, Mini-Scene®, Complete Scenes and Trackside Scenes all contain white metal castings that are loaded with details and easy to assemble. First clean castings, then glue pieces according to included diagrams and instructions using a cyanoacrylate (super glue). Let glue dry and paint.



## Complete Scenes

Nearly any model railroad would be improved with the addition of any of our Complete Scenes. The kits contain highly detailed pieces, plus all the materials needed to build one of the three scenes shown (except paint and glue). All are HO scale and can be assembled in several different ways to fit into the available space.

### **Memorial Park S132** *(shown above)*

A small community would not be complete without a place to get together on those warm summer evenings. Over 40 detailed accessories - trees, Foliage, turf and the materials for fence and shed - are packed into this scene.

*8" x 14" scene*



### **Smiley's Tow Service S130**

This scene includes over 60 white metal castings. Seven trees, Foliage and turf are provided to make Smiley's a thriving enterprise.

*7" x 9" scene*



### **Maple Leaf Cemetery S131**

It is mere chance if you find your name on one of the 28 tombstones included in this kit of more than 40 detailed accessories. Eight trees and all the Foliage and turf are provided to make this scene.

*8" x 11" scene*





## Trackside Scenes

Trackside Scenes are designed specifically for the modeler who wants the utmost in fine quality craftsmanship, intricate detail and authenticity. These kits are probably different than any you have previously constructed. These are not simply models of a single item, but of a complete scene. Each HO scale kit contains over 70 highly detailed pieces. Includes trees, turf, Foliage and all the accessories necessary to complete a scene covering up to 200 square inches. Paint with our Mini-Scene® Paint Set (M125, with 12 assorted colors). Any layout will benefit from the addition of one or more of these scenes.



### Tie & Plank Mill TS154 *(shown above)*

This small, steam-powered sawmill and dipping shed converted raw timber into ties and planks to supply the needs of local rail lines.



### Possum Hollow TS151

An abandoned caboose has been converted to a home for a backwoods family. The piles of accumulated junk add to the whimsy of the scene.



### Caboose & Sand Facility TS152

This is a common sight found around railroad yards. The sand tower supplies the locomotives' needs while the storage shed keeps the caboose well-stocked.



### Otis Coal Company TS153

Private coal companies like this were found along spur lines throughout the United States. Such facilities served as the link between the long coal trains and the consumer.



## Dry Transfer Decals

Woodland Scenics® Dry Transfer Decals are the quick and easy way to make your hobby projects look great. The wide range of decals will add desired detail to buildings, fences, signs and box cars in full color. Give your layout, diorama or miniature scene the touch of authenticity needed to bring it truly alive. Our Dry Transfer Decals give you the ultimate in realism without the fuss and bother of wet process decals.

4" x 5" sheets

### Dry Transfer Burnisher DT600

Use this Burnisher to transfer decals from their carrier sheet to any surface. Made of a smooth-gliding plastic, this burnisher has a fine point for small Dry Transfers and a wide blade for burnishing larger areas, with a chisel point for working Dry Transfer Decals into textures.



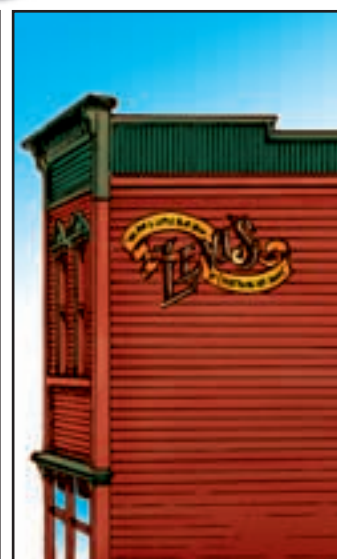
1. Position the Dry Transfer Decal where you want it and rub over the top with a Burnisher or dull pencil.



2. Carefully remove the carrier sheet.



3. Place the carrier sheet over the Dry Transfer Decal and burnish again. Smooth into rough or textured surfaces with light pressure from your thumb or an eraser.



4. Dry Transfer Decals can be "weathered" with a light sanding or other various techniques.



## Signs & Posters

Transform your cities and towns with color, variety and life. Easily create a large array of business, advertising and railroad signs using D245, DT551-DT557 and DT559-DT563.



**Series One**  
D245



**Tavern, Gas Station and Commercial Signs**  
DT551



**Assorted Business Signs**  
DT552



**Depot, R.E.A. and Advertising Signs**  
DT553



**Product and Advertising Signs**  
DT554



**Road Product and Burma-Shave Signs**  
DT555



**Assorted Logos and Advertising Signs**  
DT556



**Data Warning Labels and Commercial Signs**  
DT557



**Business Signs**  
DT559



**Crate Labels and Warning Signs**  
DT560



**1960's Signs and Posters**  
DT561



**1950's Signs and Posters**  
DT562

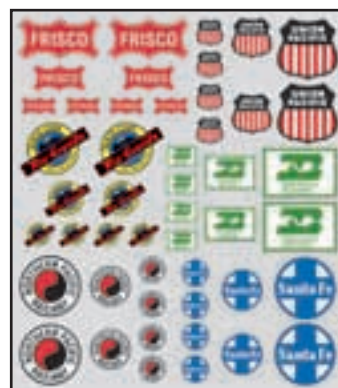


**1940's Signs and Posters**  
DT563

## Box Car

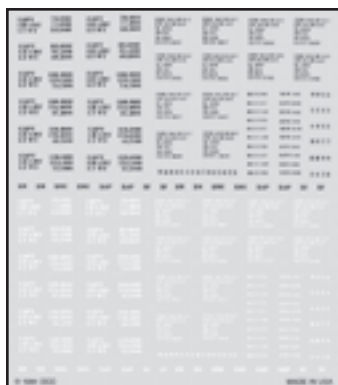
Expertly detail your box cars with the logos, heralds and reporting marks of individual railroads. DT558, DT601-DT611

While most other dry transfers come in one or maybe two colors, Woodland Scenics® Dry Transfer Decals are reproduced in full color.

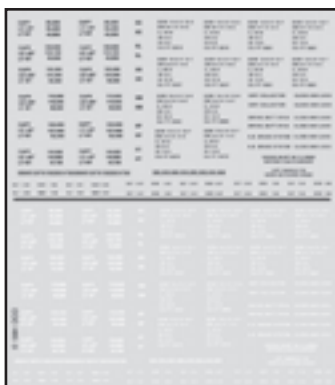


**Railroad Heralds**  
DT558





Box Car Data-Roman  
Black/White HO Scale  
DT601



Box Car Data-Gothic  
Black/White HO Scale  
DT602



Union Pacific Box Cars  
DT603



Santa Fe Box Cars  
El Capitan/Super Chief  
DT604



Santa Fe Box Cars Super Shock  
Control/Ship and Travel  
DT605



Rock Island Box Cars Soft Touch/  
DF HO Scale  
DT606



BN and CB and O Box Cars  
General Freight/Everywhere West  
DT607



Frisco Box Cars  
DT608



Southern Pacific Box Cars  
Hydra-Cushion/DF HO Scale  
DT609



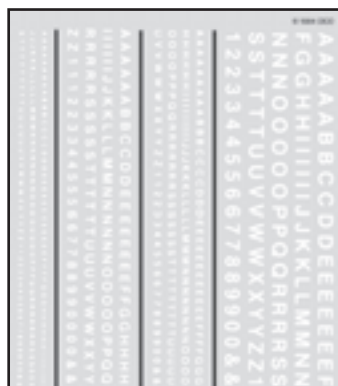
Great Northern Box Cars Modern  
General Freight HO Scale  
DT610



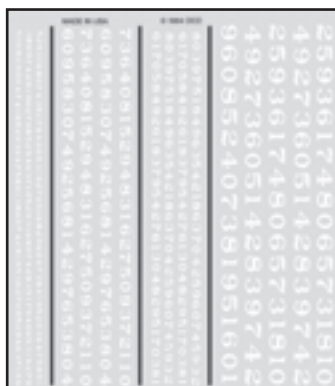
Reefer Cars Armour/Miller/  
Hormel HO Scale  
DT611

**Letters, Lines and Numbers**  
Add graphic touches and create your own custom signs with Dry Transfer letters, lines and numbers. DT501-DT512, DT515

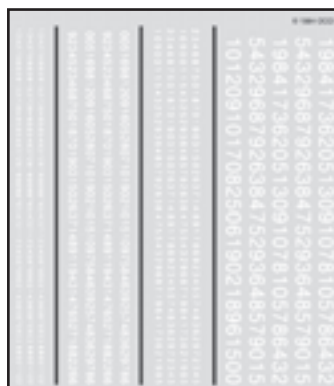
Application is as simple as positioning the Dry Transfer in the desired area, rubbing gently on the back and slowly peeling away the carrier sheet.



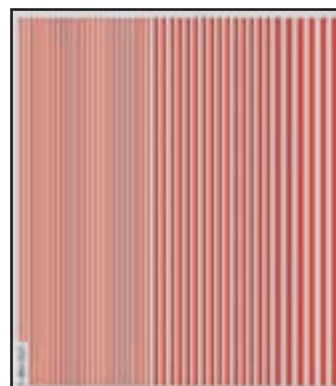
R.R. Gothic-White  
(1/16", 3/32", 1/8", 3/16")  
DT507 (Black-DT508)



R.R. Roman Numbers-White  
(1/16", 3/32", 1/8", 3/16")  
DT510 (Black-DT509)



R.R. Gothic Numbers-White  
(1/16", 3/32", 1/8", 3/16")  
DT512 (Black-DT511)



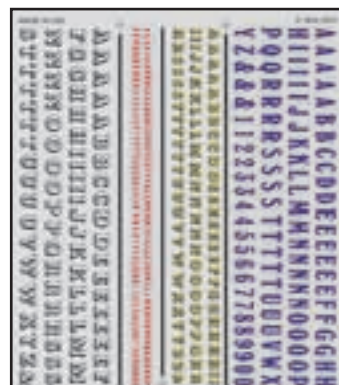
Stripes-Red\*  
(1/64", 1/32", 1/16")  
DT515

\*Stripes also available in  
Black-DT513, White-DT514, Yellow-DT516





**Tuscan & Playbill**  
1/16", 3/32", 1/8", 3/16"  
DT501



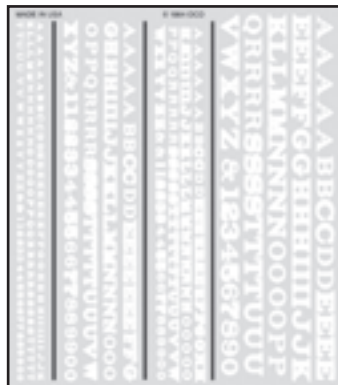
**Benton & Windsor**  
3/32", 1/8", 3/16", 1/4"  
DT502



**Gothic Outline & Sign Painter**  
5/16", 3/16"  
DT503



**R.R. Roman Red/Gold**  
1/16", 3/32", 1/8", 3/16"  
DT504



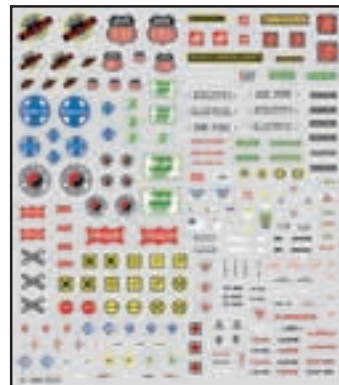
**R.R. Roman White**  
1/16", 3/32", 1/8", 3/16"  
DT506 (Black-DT505)

### Mini-Series

The same quality and variety of Dry Transfer Decals as our originals, only in a small size. Perfect for N scale modelers and anywhere smaller signs and logos are required.  
DT570-DT575



**Mini-Series Product Logos**  
DT570



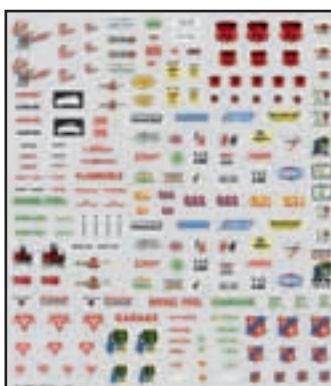
**Mini-Series Railroad Signs**  
DT571



**Mini-Series Business Signs**  
DT572



**Mini-Series Signs and Posters**  
DT573



**Mini-Series Service Station Signs**  
DT574



**Mini-Series Lettering Black & White**  
DT575

## Model Graphics®

Model Graphics® Dry Transfer Decals are easy to use. Place where desired and burnish (see instructions on page 57). Model Graphics® 64 sheet selection of Dry Transfer Decals contain 340 different alphabets, number sets and line assortments to satisfy the lettering and striping needs of every craftsman. Intricate detailing is quicker, less complicated and more realistic than when attempted with wet process decals.

5 5/8" x 8 1/4" sheets

### Dry Transfer Burnisher DT600

Use this Burnisher to transfer Model Graphics® from their carrier sheet to any surface.



M V H Q I S  
1/16 3/32 1/8 3/16 1/4 5/16

**Roman, R.R.**  
MG701 (Black) MG702 (White)  
MG703 (Gold) MG704 (Red)  
MG705 (Yellow) MG706 (Silver)

3 6 9 2 4 8  
1/16 3/32 1/8 3/16 1/4 5/16

**Numbers Roman, R.R.**  
MG707 (Black) MG708 (White)  
MG709 (Gold) MG710 (Red)  
MG711 (Yellow) MG712 (Silver)

N 8 G I  
3/8 1/2

**Roman, R.R.**  
MG713 (Black)  
MG714 (White)

E A I Z Q  
1/16 3/32 1/8 3/16 1/4

**Extended Roman, R.R.**  
MG715 (Black)  
MG716 (White)  
MG717 (Gold)

B V N S X R  
1/16 3/32 1/8 3/16 1/4 5/16

**Condensed Roman, R.R.**  
MG718 (Black)  
MG719 (White)

A D O B X J  
1/16 3/32 1/8 3/16 1/4 5/16

**Gothic, R.R.**  
MG720 (Black) MG721 (White)  
MG722 (Gold) MG723 (Red)  
MG724 (Yellow) MG725 (Silver)

1 3 5 7 9 0  
1/16 3/32 1/8 3/16 1/4 5/16

**Numbers Gothic, R.R.**  
MG726 (Black) MG727 (White)  
MG728 (Gold) MG729 (Red)  
MG730 (Yellow) MG731 (Silver)

F 2 L 3  
3/8 1/2

**Gothic, R.R.**  
MG732 (Black)  
MG733 (White)

P U K W E  
1/16 3/32 1/8 3/16 1/4

**Extended Gothic, R.R.**  
MG734 (Black)  
MG735 (White)  
MG736 (Gold)

J M S I K E  
1/16 3/32 1/8 3/16 1/4 5/16

**Condensed Gothic, R.R.**  
MG737 (Black)  
MG738 (White)

B G U S O A  
1/16 3/32 1/8 3/16 1/4 5/16

**45° USA Gothic**  
MG739 (Black) MG740 (White)  
MG741 (Red) MG742 (Yellow)  
MG743 (Silver)

G 3 S 9  
3/8 1/2

**45° USA Gothic**  
MG744 (Black)  
MG745 (White)

0 9 7 5 2 8  
1/16 3/32 1/8 3/16 1/4 5/16

**Numbers 45° USA Gothic**  
MG746 (Black) MG747 (White)  
MG748 (Red) MG749 (Yellow)  
MG750 (Silver)

P K T S N G  
3/32 1/8 1/4 3/32 1/8 1/4

**Stencil & Block Roman**  
MG751 (Black) MG752 (White)  
MG753 (Red) MG754 (Yellow)

K 9 P 7 0 8 1  
3/16 5/16 3/16 5/16

**Script & Old English**  
MG755 (Black) MG756 (White)  
MG757 (Gold) MG758 (Silver)

0.010 1/64 .022 1/32 3/64

**Stripes**  
MG759 (Black) MG760 (White)  
MG761 (Gold) MG762 (Red)  
MG763 (Yellow) MG764 (Silver)



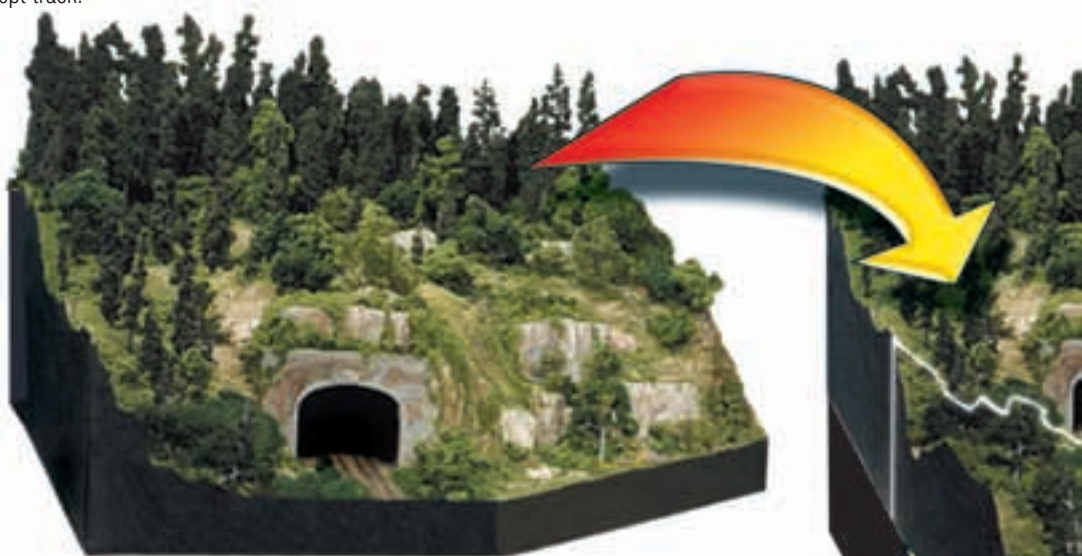
# MOD-U-RAIL® SYSTEM

## Build the Layout of your Dreams...One Module at a Time

The Mod-U-Rail® System gives you the freedom and convenience to build the layout of your dreams: one module at a time! This system consists of module kits which can be bolted together to create a layout of any size, in most any scale. They can also be used to add on to an existing layout. Whether you are creating a layout for your home, starting a module club or building a layout with friends, you can build a module in a couple of evenings. Everything is included in the kit except track.

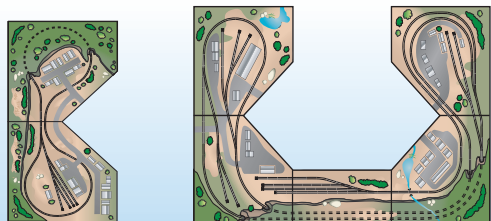
- All materials needed to build these modules, including landscaping
- Works with all track brands
- No expensive power tools, complicated calculations or dusty mess
- Design your own track plan or use a plan included in kit
- Easy bolt-together system
- Save over 30% on items purchased separately

**FREE Module Kit** - Purchase any five Straight and Corner Kits to receive a FREE Straight Module Kit (ST4801). Complete details on box.

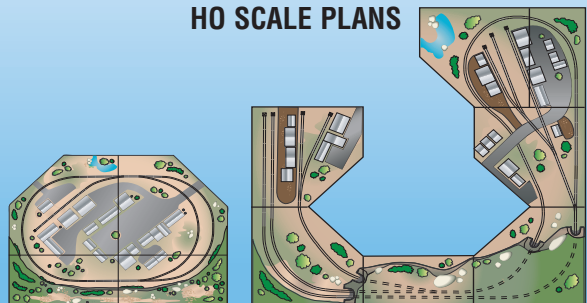


### THESE TRACK PLANS INCLUDED IN KITS

#### N SCALE PLANS



#### HO SCALE PLANS



### Straight Module Kit\*

ST4801

- 18 x 36-inch module



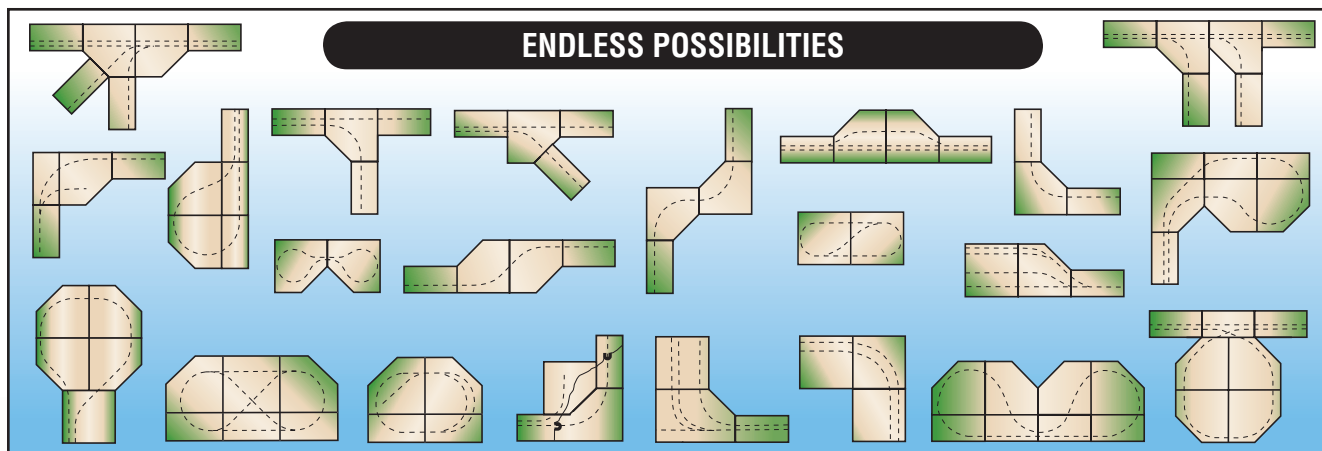
\*Track not included.

### Corner Module Kit\*

ST4802

- 36 x 36-inch module
- Can also be built as a square

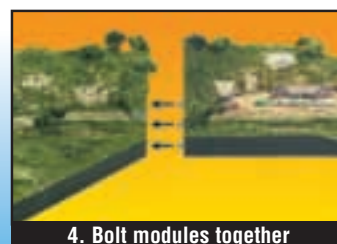
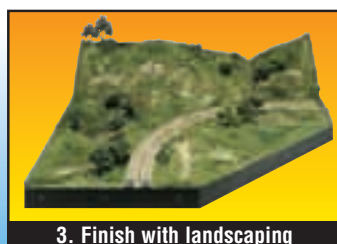




**N or HO**  
Also great for  
O, S and Z scales



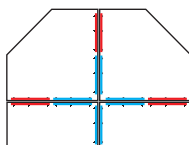
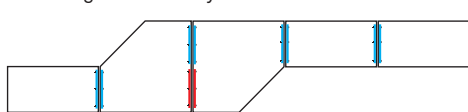
9 x 6-foot layout shown includes: (1) Straight and (4) Corners (with additional products added).





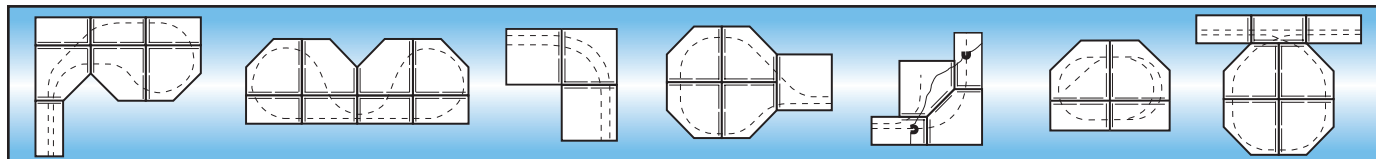
## Connector Plate Set ST4780

We have developed the Connector Plate Set to expand the possibilities of Mod-U-Rail® layouts and make achieving that dream layout much easier! You are not limited to bolting the modules together end-to-end. Now, you can bolt them together side-by-side.



Each module kit includes two connector plates with hardware for bolting end-to-end.

The Connector Plate Set gives you additional connectors for unlimited possibilities in your layout design.



## Interactive Web site!

Design your own layout using our interactive Web site. Learn how easy it is to plan your model railroad layout using the Mod-U-Rail® System.

- Go to [www.woodlandscenics.com](http://www.woodlandscenics.com)
- Click on the New Product Links: "Mod-U-Rail® System...more info"
- Click the "Interactive Layout" button
- Click "Begin"
- Drag the module patterns and create your dream layout



## Mod-U-Rail® DVD ST4799

View this introductory DVD on our Web site, or for a copy send us your name and address along with \$5.00 for shipping and handling.



1. Build the base



2. Create terrain with Plaster Cloth



3. Finish with landscaping



4. Bolt modules together

## Mod-U-Rail® Kit Stands

These are the perfect stands for your Mod-U-Rail® System. Each module has its own stand. The stands are ready to assemble with all the necessary hardware. Each stand is 35 1/2" tall with pre-drilled holes and adjustable feet, which allow you to level the stand. It also includes bolts to join the stands together in numerous configurations. Once built, you will have a sturdy display for your modules which can be painted for a finished look!

Available  
on our Web site  
[www.woodlandscenics.com](http://www.woodlandscenics.com)



Mod-U-Rail® System



**Straight Module Kit Stand** ST4790

18" x 36" x 35 1/2" - 22 lbs.



**Corner Module Kit Stand** ST4791

36" x 36" x 35 1/2" - 27 lbs.

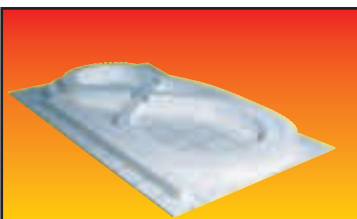


**Square Module Kit Stand** ST4792

36" x 36" x 35 1/2" - 26 lbs.







Install Risers and Inclines on track plan that is pre-printed on the base.



Cut profile contours with the Hot Wire Foam Cutter or Foam Knife.



Use newspaper wads to form terrain contours and cover with wet Plaster Cloth to form a hard shell.



Install and color rocks and Tunnel Portals, paint terrain base and add roads using the Road System.

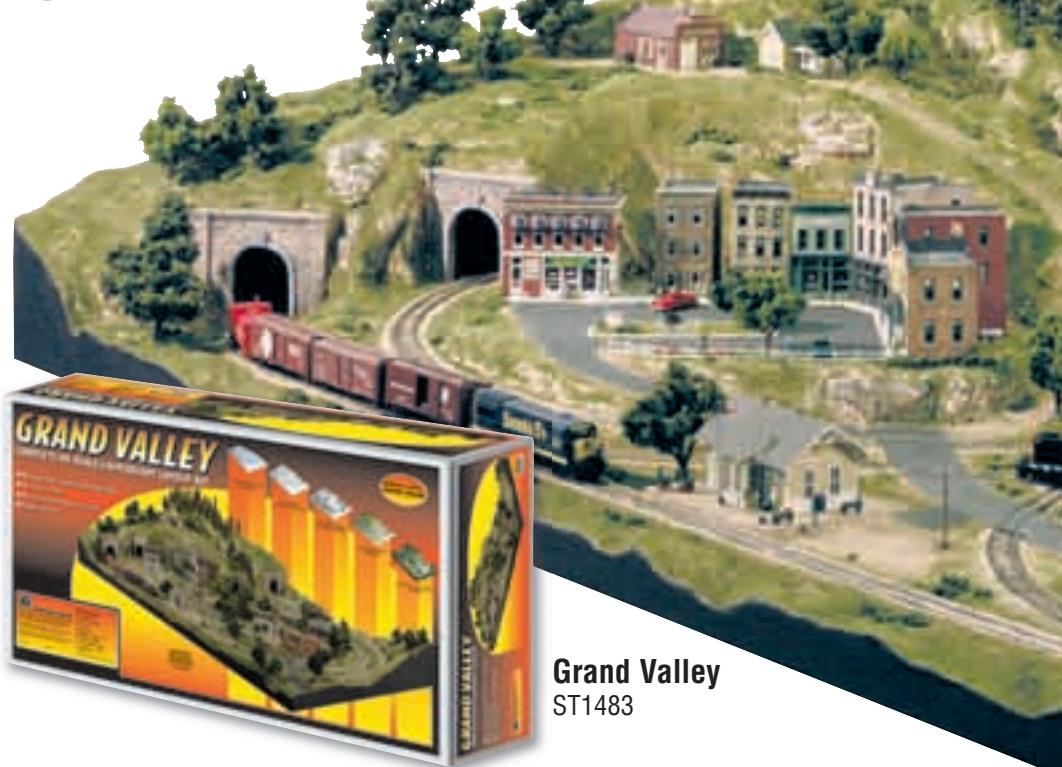


Landscape with ground covers and trees. Paint the layout profile, then add finishing details if desired.

## Both Layout Kits:

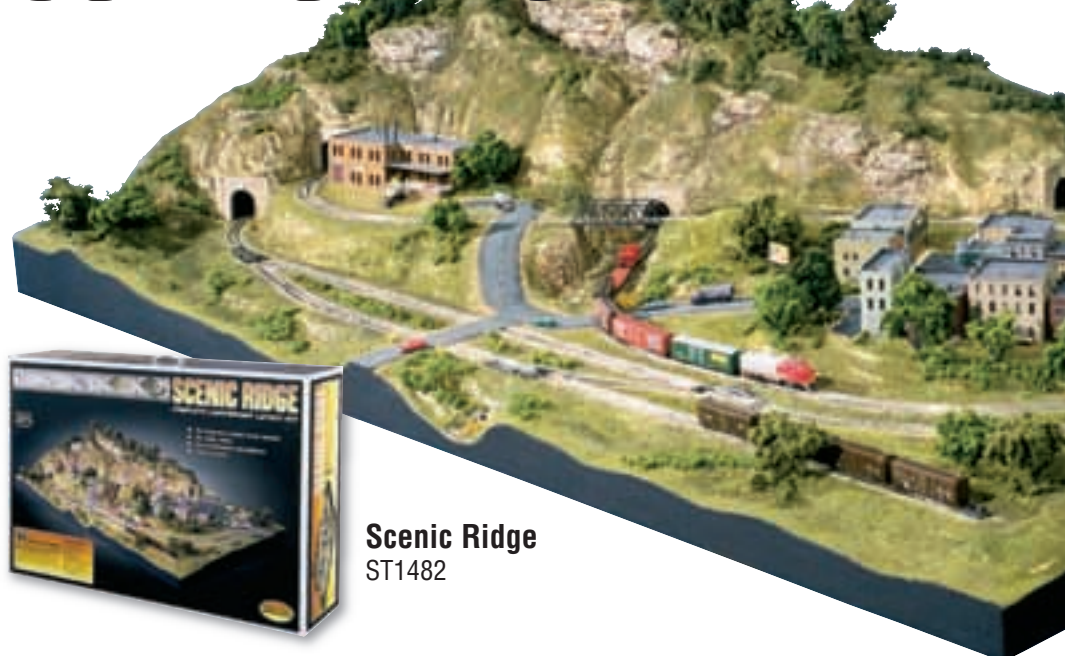
- Include SubTerrain, terrain and landscape products
- Require no expensive power tools
- Require no complicated calculations
- Are stand-alone layouts or can be customized to fit a larger layout
- Include track plans and illustrated instructions

# GRAND VALLEY



Grand Valley  
ST1483

# SCENIC RIDGE®



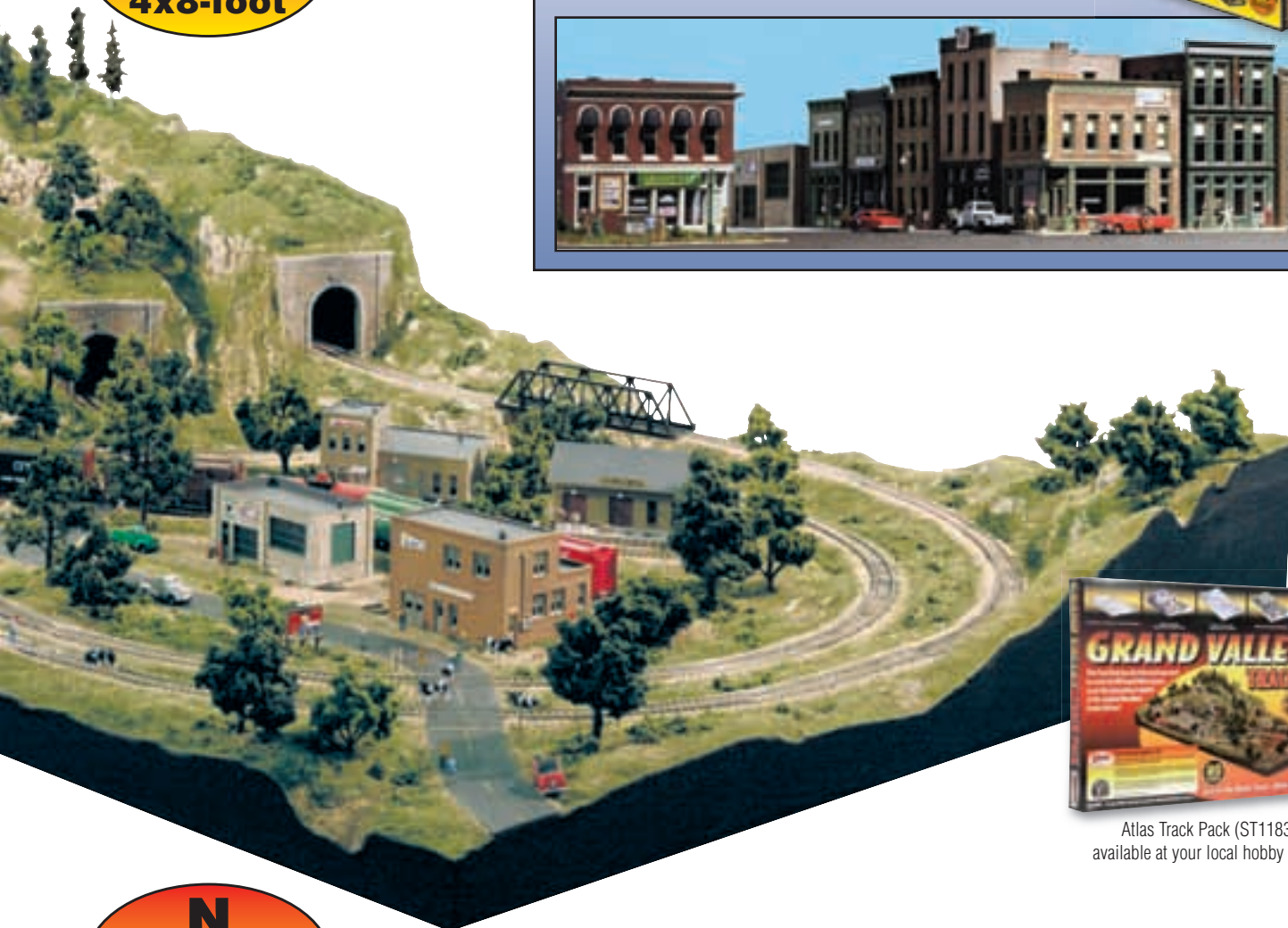
Scenic Ridge  
ST1482



**HO  
SCALE  
4x8-foot**

### **City & Industry Building Set S1486**

- Complements Grand Valley Layout Kit or any HO scale layout
- A complete city in a box
- Fifteen HO scale building kits
- Buildings feature molded-in, architectural details
- Over 160 detailed accessories and 130 Dry Transfer Decals
- Super value - saves money over items purchased separately



Atlas Track Pack (ST1183)  
available at your local hobby shop.

**N  
SCALE  
3x6-foot**

### **Town and Factory Building Set S1485**

- Complements Scenic Ridge Layout Kit or any N scale layout
- Thirteen N scale building kits
- Buildings feature molded-in, architectural detail
- Over 70 detailed accessories and 60 Dry Transfer Decals
- Super value - saves money over items purchased separately



Atlas Track Pack (ST1182)  
available at your local  
hobby shop.



# RIVER PASS

## Build a complete 4 x 8-foot layout with three easy-to-assemble kits

These kits are designed to interact, but can be used separately. Each kit includes detailed plans and instructions. When complete, the modeler will not only have a great layout but the knowledge to build more. A completed River Pass can be used independently, can be added to, or attached to an existing layout.



Atlas Track Pack (ST1184)  
available at your local hobby shop.

### Layout Kit #1 ST1484

This kit includes all the materials to build a SubTerrain layout base. Build up the track and roads with Inclines and Risers and establish flat areas with Foam Sheets. Use Profile Boards to build perimeters. Then build up the terrain with newspaper wads and Plaster Cloth to make mountains, plains and other terrain features with a hard shell.

- No dusty mess
- No power tools or complicated calculations
- Designed for expansion

**SAVE 20%**  
Over items purchased  
separately.



### Scenery Kit #2 S1488

This kit includes enough scenery materials to cover the River Pass Layout Kit or any 4 x 8-foot layout. It features Realistic Water and Water Effects, Dead Fall, Flowering Foliage, Underbrush, Bushes, Fine-Leaf Foliage, Rock Molds, Fine Turf, Ballast, Talus and Clump-Foliage.

- Over 40 products included
- Can be adapted to any scale
- Detailed instructions for River Pass placement

**SAVE 35%**  
Over items purchased  
separately.

**HO  
SCALE  
4x8-foot**

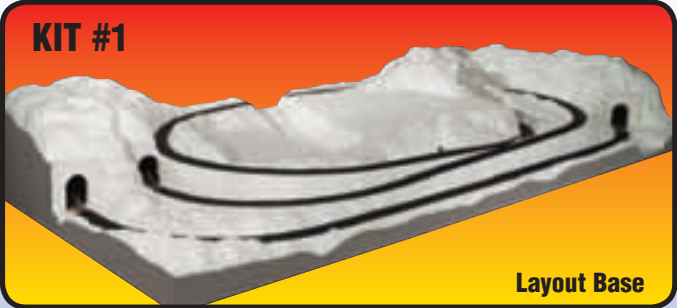


**Building Kits #3 S1487**

These kits are a collection of 15 buildings, created with authenticity and fine detail. These include all the detailed accessories and Dry Transfer Decals you'll need to detail the buildings on your layout. Use the included River Pass street plan, or create your own HO scale plan, using an existing layout.

**SAVE 38%**  
Over items purchased separately.

- Over 200 detailed accessories
- 110 Dry Transfer Decals
- 20 signs and posters



**Layout Base**



**Layout Base and Scenery**



**Layout Base, Scenery and Buildings**

Train and vehicles not included in these kits.  
Track and buildings sold separately.



## Scenery Kits

### Complete Landscape Kit S926

This is an excellent landscape starter kit that includes an assortment of our products.

- 18 white metal tree armatures
- Three packages of Foliage
- Seven tree stumps
- Two packages of Green Blend Blended Turf
- Three packages of turf accent colors



### The Scenery Kit S927

This kit is for beginners.

- Learn terrain and landscaping techniques
- Build a 10 x 18-inch HO scale diorama
- Over 20 products included
- Display an engine or piece of rolling stock

*Train not included.*



### SubTerrain Scenery Kit S929

This kit uses SubTerrain, Terrain and Landscaping Systems.

- Build a 12 x 24-inch N scale diorama
- Learn SubTerrain's five easy steps - no mess or complicated calculations
- Create realistic terrain features with Plaster Cloth, rock castings and a Tunnel Portal
- Make trees and landscape with various ground covers, Ballast, Talus and other scenery products

*Train not included.*



### Mountain Valley Scenery Kit® S928

This kit takes your flat board layout, with only a track, and brings it to life. It includes detailed, illustrated instructions to make tunnels and terrain profiles.

- Covers a 4 x 8-foot area
- Designed for HO scale, adapts to N or O
- Over 24 products included
- Teaches terrain and landscaping techniques

*Train, track, buildings and vehicles not included.*



## River Pass Scenery Kit S1488

This kit has a variety of landscaping products including Realistic Water, Water Effects, Fine-Leaf Foliage, Dead Fall and more.

- Covers any 4 x 8-foot layout
- Designed for River Pass
- Over 40 products included
- Can be adapted to any scale

*Track sold separately.*



## Collectible House Display Kit CH1057

All the materials needed to build this display are included in this kit.\* This kit is assembled quickly and easily. Great for the beginner up to the expert.

- Make an 18 x 10-inch display
- Over 11 products included
- Use as a night-light in any room
- Teaches how to use the Terrain and Landscaping Systems

*\*House not included.*



## Build a Display for Collectible Houses

VHS CH1056 - DVD CH1055

Create the magic through this step-by-step video that teaches you how to build a 31 x 44-inch display for your collectible houses. This enchanted scenery display can be shown year-round and modified to fit any table, buffet, TV, dresser, fireplace or mantel. Use your imagination when working with these revolutionary Woodland Scenics® products. Included in this video are various tips, techniques, ideas and instructions on each product.

*Houses, people and streetlights not included.*





## Hob-Bits®

These are high-quality brass machine screws, nuts and washers. The machine screws come in four sizes and four different styles. They are the ideal precision fasteners for countless hobby projects. Hob-Bits® tools include wrenches, taps and dies for all four sizes shown below.

Round Head Screws			
No.	Size	Length	Qty.
H801	00-90	1/8"	5
H802	00-90	1/4"	5
H803	00-90	3/8"	5
H804	00-90	1/2"	5
H805	0-80	1/8"	5
H806	0-80	1/4"	5
H807	0-80	3/8"	5
H808	0-80	1/2"	5
H809	1-72	1/8"	5
H810	1-72	1/4"	5
H811	1-72	3/8"	5
H812	1-72	1/2"	5
H813	2-56	1/8"	5
H814	2-56	1/4"	5
H815	2-56	3/8"	5
H816	2-56	1/2"	5

Fillister Head Screws			
No.	Size	Length	Qty.
H821	00-90	1/8"	5
H822	00-90	1/4"	5
H823	00-90	3/8"	5
H824	00-90	1/2"	5
H825	0-80	1/8"	5
H826	0-80	1/4"	5
H827	0-80	3/8"	5
H828	0-80	1/2"	5
H829	1-72	1/8"	5
H830	1-72	1/4"	5
H831	1-72	3/8"	5
H832	1-72	1/2"	5
H833	2-56	1/8"	5
H834	2-56	1/4"	5
H835	2-56	3/8"	5
H836	2-56	1/2"	5

Flat Head Screws			
No.	Size	Length	Qty.
H841	00-90	1/8"	5
H842	00-90	1/4"	5
H843	00-90	3/8"	5
H844	00-90	1/2"	5
H845	0-80	1/8"	5
H846	0-80	1/4"	5
H847	0-80	3/8"	5
H848	0-80	1/2"	5
H849	1-72	1/8"	5
H850	1-72	1/4"	5
H851	1-72	3/8"	5
H852	1-72	1/2"	5
H853	2-56	1/8"	5
H854	2-56	1/4"	5
H855	2-56	3/8"	5
H856	2-56	1/2"	5

Hex Head Screws			
No.	Size	Length	Qty.
H861	00-90	1/8"	5
H862	00-90	1/4"	5
H863	00-90	3/8"	5
H864	00-90	1/2"	5
H865	0-80	1/8"	5
H866	0-80	1/4"	5
H867	0-80	3/8"	5
H868	0-80	1/2"	5
H869	1-72	1/8"	5
H870	1-72	1/4"	5
H871	1-72	3/8"	5
H872	1-72	1/2"	5
H873	2-56	1/8"	5
H874	2-56	1/4"	5
H875	2-56	3/8"	5
H876	2-56	1/2"	5

Dies		
No.	Size	Qty.
H877	00-90	1
H878	0-80	1
H879	1-72	1
H880	2-56	1

Hex Nuts		
No.	Size	Qty.
H881	00-90	5
H882	0-80	5
H883	1-72	5
H884	2-56	5

Wrenches		
No.	Size	Qty.
H885	00-90	1
H886	0-80	1
H887	1-72	1
H888	2-56	1

Washers		
No.	Size	Qty.
H891	00-90	5
H892	0-80	5
H893	1-72	5
H894	2-56	5

Taps		
No.	Size	Qty.
H895	00-90	1
H896	0-80	1
H897	1-72	1
H898	2-56	1



## Hob-E-Lube® Premium Oils

These oils are plastic and paint compatible and come with a metal cap and 2 1/4" needle applicator (for hard to reach areas). .5 fl. oz.

### Ultra-Lite Oil HL661

Contains proven anti-wear additives. Use on HO and smaller scales of model trains, precision instruments or where a light oil is needed.

### Medium Oil HL663

Prevents metal contact and surface scuffing. Specially formulated for use on R/C cars, airplanes, boats and HO scale and larger model trains.

### Lite Oil HL662

Multi-viscosity additives for trouble-free operation, even at extreme temperatures. Great for home and workshop applications.

### Gear Lube HL664

A true gear lubricant, where tough, lasting gear oil is needed.



## Hob-E-Lube® Lubricants

Use these lubricants on model trains, R/C cars, planes and boats.

### Dry Graphite HL651

With Molybdenum: will not collect dust, has good adherence properties and clings to sliding surfaces. Ideal for metal, wood, plastic and rubber. .21 oz.

### Ultra-Lite Oil HL653

A light viscosity oil for small, precision parts. Penetrates and lubricates close-tolerance areas. .5 fl. oz.

### Gear Lube HL655

A tough, long-lasting, heavy-duty, hobby lubricant with tack additive for anti-drip adherence. Use on small gears and at high friction points. .5 fl. oz.

### White Grease HL657

With Teflon\*: a non-staining, clean lubricant that is waterproof and protects against corrosion. 1/3 oz.

### Dry White Lube HL652

With Teflon\*: is white and non-staining. It will not conduct electricity or collect dust. Use on metal, wood, plastic and rubber. .125 oz.

### Lite Oil HL654

A multi-viscosity, general-purpose hobby lubricant for light load-bearing applications. An ideal rust preventative. .5 fl. oz.

### Moly Grease HL656

With Molybdenum: covers the entire surface and maintains viscosity at high temperatures. A high load-bearing, waterproof grease that stays put. 1/3 oz.

### 7-Pak Workbench Assortment HL650

This super-saver value includes all seven lubricants, plus instructions that list applications and the exact lubricant to use.



**COMING  
SOON**

## Scene-A-Rama™ School Projects

Scene-A-Rama™ is a line of products that make up a system, used to create dioramas or any school projects. It includes complete Diorama Kits, Projects Bases with Backdrops for displaying projects, Add-On Kits for detail, trees, accessories, adhesives, grass mats and a comprehensive project book full of fun and easy project ideas.



### Diorama Kits

Each kit includes everything you need to make basic scenery, a desert oasis, a mountain or water scene.



### Trees

Choose from four different tree types: Green and Fall Deciduous, Conifer or Palm.



### Project Bases

Show your project with a base and backdrop. Choose Large (12" x 18") or Small (9" x 12")



*Small Base displaying included Backdrop.*

### Add-On Kits

Add detail with kits that make grasses and foliage, water, desert plants, snow or rocks.



### Project Accessories

Includes adhesives and products for creating mountains or casting rocks or fossils.



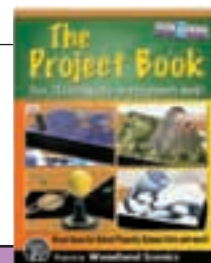
### Project Kits

Choose from three different kits: make buildings, sculpt animals and shapes, or stencil letters and paint your backdrop.



### Project Book

This book includes 24 fun and easy projects, plus hundreds of simple modeling tips and techniques from modeling and scenery experts.





## Merchandisers and Assortments

Retailers, stock your store with the finest merchandisers and assortments in the hobby industry. Our merchandisers attract customer attention in your shop with bright headers and saleable products. They are all compact and space-saving merchandisers, which can be set on the floor, countertop or shelves, or hung on pegboard or slat wall. Our merchandisers are easy to assemble and have reorder tags for easy replenishment of sold-out products. Offsetting free goods are offered with most merchandisers when purchased with an assortment.

### SCENE-A-RAMA™

#### Scene-A-Rama™ Merchandiser ..... SP4095

This merchandiser sits on the floor and displays over 25 products, which include Diorama Kits, Add-On Kits, Trees, ReadyGrass™ Sheets, Project Bases, Project Adhesives, Project Accessories and the Project Book.

30" w x 72" h x 18" d

#### Scene-A-Rama™ Complete Assortment ..... SP4100

- 4 each SP4110-4113, SP4120-4124, SP4141, SP4150-4153
- 6 each SP4130-4132, SP4140, SP4142-4143, SP4160-4162, SP4170
- 8 each SP4165-4166

#### Scene-A-Rama™ Half Assortment ..... SP4101

- 2 each SP4110-4113, SP4120-4124, SP4141, SP4150-4153
- 3 each SP4130-4132, SP4140, SP4142-4143, SP4160-4162, SP4170
- 4 each SP4165-4166

Product descriptions on page 73.



### SUBTERRAIN BUILT UP

#### SubTerrain Dealer In-Store Built Up ..... D10

A staged built up that demonstrates the five easy steps of the SubTerrain System. Set by the SubTerrain products to promote sales. Purchase this display and receive the SubTerrain Scenery Kit (S929) **FREE**. This is a dealer-direct item.



### SUBTERRAIN

#### SubTerrain Merchandiser ..... ST1490

The SubTerrain Merchandiser displays 35 different products from the SubTerrain System, including foam components, Plaster Cloth, Track-Bed, a manual and video, plus all the tools and adhesives needed. The merchandiser stands on the floor. Knocker Test Board included.

32" w x 88" h x 24" d

#### SubTerrain Display Assortment ..... ST1495

- 2 each ST1435, ST1437, ST1445
- 4 each ST1401, ST1402, ST1406, ST1407, ST1409, ST1410, ST1412, ST1413, ST1422, ST1423, ST1431-ST1434, ST1436, ST1444, ST1447, ST1452-ST1455
- 6 each ST1471, ST1472
- 8 each ST1411, ST1446
- 12 each ST1408, ST1419, ST1424
- 8 each C1203
- 4 each C1205

#### SubTerrain Display Half Assortment ..... ST1495H

- 2 each ST1435, ST1437, ST1445
- 2 each ST1401, ST1402, ST1406, ST1407, ST1409, ST1410, ST1412, ST1413, ST1422, ST1423, ST1431-ST1434, ST1436, ST1444, ST1447, ST1452-ST1455
- 3 each ST1471, ST1472
- 4 each ST1411, ST1446
- 6 each ST1408, ST1419, ST1424
- 4 each C1203
- 2 each C1205

#### SubTerrain Expansion Merchandiser ..... ST1491

Expansion Merchandiser allows your SubTerrain Merchandiser to grow, the shelves are adjustable. The merchandiser stands on the floor.

15" w x 53" h x 24" d

#### Expansion Assortment ..... ST1492

- 1 each S929
- 3 each ST1460
- 4 each ST1414-ST1416, ST1470, ST1473

#### Project Foam Assortment ..... ST1497

- 3 each ST1427
- 4 each ST1426
- 6 each ST1422-ST1425



ST1491  
Shown with  
Assortment  
ST1497

ST1490  
Shown with  
Assortment  
ST1495

ST1491  
Shown with  
Assortment  
ST1492

SubTerrain Merchandiser shown with two Expansion Merchandisers.

Product descriptions on pages 6-9.

## TRACK-BED

### Track-Bed Roll Merchandiser ..... ST1489

This merchandiser holds Track-Bed Rolls, Super Sheets, Foam Tack Glue and Foam Nails. This merchandiser can stand on the floor or be hung on pegboard. Knocker Test Board included.

31" w x 45" h x 14" d

### Track-Bed Assortment ..... ST1466

- 8 each ST1432, ST1444, ST1476-ST1478
- 10 each ST1475
- 12 each ST1474



Product descriptions on pages 10-11.

## TERRAIN

### Terrain Center Merchandiser ..... C1299

This merchandiser is a spinning floor display, which holds more than 60 Terrain System products. It has a colorful header and assembles easily.

24" w x 82" h x 24" d

### Terrain Display Assortment ..... C1295-A

- 4 each C1204-C1207, C1215-C1223, C1228-C1244, C1250, C1252-C1265, C1270-C1285, C1152-C1165
- 4 each S192, R990
- 8 each C1201-C1203

### Terrain Display Half Assortment ..... C1295H-A

- 2 each C1204-C1207, C1215-C1223, C1228-C1244, C1250, C1252-C1265, C1270-C1285, C1152-C1165
- 2 each S192, R990
- 4 each C1201-C1203



Product descriptions on pages 12-16.

## SHAKERS

### Shaker Merchandiser ..... BT1399

This merchandiser holds 36 Canister Shakers. It is a counter, shelf, pegboard or slat wall display, and includes a two-color header. No assembly required.

17" w x 26 1/2" h x 9" d

### Underbrush, Bushes and Flock Assortment ..... FC1630

- 2 each FC1634-FC1639, FC1644-FC1649, FL631-FL636

### Ballast Shaker Assortment ..... B1398

- 2 each B1372-B1376, B1379-B1383, B1386-B1390, B1393-B1395

### Turf Shaker Assortment ..... T1396

- 2 each T1341-T1346, T1349, T1350, T1353-T1356, T1361-T1366

### Static Grass Flock Assortment ..... FL630

- 2 each FL631-FL636



Turf Shaker Assortment  
T1396\*

Underbrush, Bushes and Flock Assortment  
FC1630\*

Ballast Shaker Assortment  
B1398\*

\*All Assortments above shown on Merchandiser BT1399

Product descriptions on pages 18-19 and 28.

See [www.woodlandb2b.com](http://www.woodlandb2b.com) for a detailed list of Assortments.



## LANDSCAPE

### Landscape Center Merchandiser..... LS2001

This merchandiser displays 104 products, is a modular floor spinner with a full-color header or can be mounted on pegboard.

31" w x 88" h x 31" d Floor Spinner or 72" w x 84" h Pegboard Display

### Landscape Assortment..... LS2020

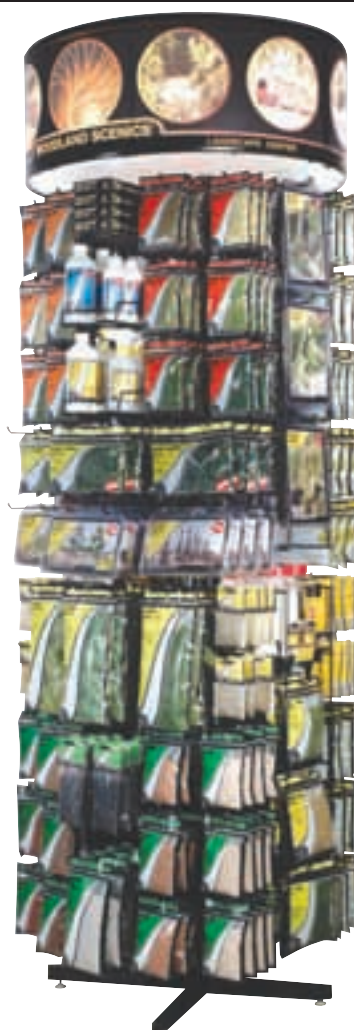
- 4 each T41-T46, T49, T50, T60-T65, F51-F56
- 4 each SN140
- 4 each FC57-FC59, FC134-FC139, FC144-FC149, FC682-FC684
- 4 each L161-L166
- 4 each FG171-FG174
- 4 each S190, S192, S194, S195
- 4 each F176-F177, FP178, F1130-F1135
- 4 each R993
- 4 each TR1111-TR1113, TR1120-TR1125
- 4 each C1206, C1207, C1211, C1212, C1228, C1229
- 4 each B70-90, B92-B94
- 4 each S30
- 8 each S191

### Landscape Half Assortment..... LS2010

- 2 each T41-T46, T49, T50, T60-T65, F51-F56
- 2 each SN140
- 2 each FC57-FC59, FC134-FC139, FC144-FC149, FC682-FC684
- 2 each L161-L166
- 2 each FG171-FG174
- 2 each S190, S192, S194, S195
- 2 each F176-F177, FP178, F1130-F1135
- 2 each R993
- 2 each TR1111-TR1113, TR1120-TR1125
- 2 each C1206, C1207, C1211, C1212, C1228, C1229
- 2 each B70-90, B92-B94
- 2 each S30
- 4 each S191



Pegboard Display



Floor Spinner

Product descriptions on pages 17-23 and 26-28.

## LEARNING KITS

### Learning Kit Assortment..... LK945

Order this assortment of Learning Kits, two each of LK951-LK956, available in attractive clamshell packaging and receive a two-color header, which measures 18 3/4" x 5 1/2".

23" w x 28" h



Product descriptions on page 5.

## READYGRASS™ VINYL MAT

### ReadyGrass™ Vinyl Mat

#### Merchandiser..... RG5096

This wire merchandiser displays the three sizes of grass mats: Large Rolls, Small Rolls and Project Sheets, each available in four realistic colors. Coordinating accessories include a Heat Tool, Mat Adhesive, plus Road Kit, Water Kit, Landscape Kit and Tree Kit.

27" w x 41 3/8" h x 16 1/4" d

### ReadyGrass™ Vinyl Mat

#### Assortment..... RG5100

- 3 each RG5121-RG5124, RG5131-RG5134, RG5141-RG5144, RG5151-RG5154, RG5162
- 6 each of RG5161



Floor Display

Product descriptions on pages 24-25.

## PREMIUM TREES

### Premium Trees Merchandiser ..... TR1699

This merchandiser includes a full-color header, reorder backing cards and 48 hooks. It displays various species of trees, ranging in size from 1 1/2" to 5 3/4", in colorful, clamshell packaging. 42" w x 28" h

### Premium Trees Assortment ..... TR1690

- 2 each TR1601-TR1624



Product descriptions on pages 30-31.

## READY MADE REALISTIC TREES

### Ready Made Realistic Trees Merchandiser ..... TR1599

This merchandiser includes a full-color header, reorder backing cards and 50 hooks. It displays 25 selections of deciduous and pine trees, ranging in size from 3/4" - 9", in colorful, clamshell packaging. 42" w x 62" h

### Ready Made Realistic Trees Assortment ..... TR1590

- 4 each TR1501, TR1502
- 2 each TR1503-TR1519
- 2 each TR1540, TR1541
- 2 each TR1560-TR1563



Product descriptions on pages 32-33.

## READY MADE TREES VALUE PACK

### Ready Made Trees Value Pack Merchandiser ..... TR1598

This vinyl merchandiser is a colorful display, which hangs on pegboard. It displays nine different colorful, clamshell packages of pine and deciduous trees. Quantities vary from 12 - 38 trees per package in sizes ranging from 3/4" - 8".

32" w x 47" h

### Ready Made Trees Value Pack Assortment ..... TR1591

- 2 each TR1570-TR1572
- 2 each TR1575-TR1577
- 2 each TR1580-TR1582



Product descriptions on page 29.

## CLUMP FOLIAGE/TREE KITS

### Clump-Foliage/Tree Kit Merchandiser ..... FC998

This vinyl merchandiser hangs on pegboard and displays six different Clump-Foliage colors, six different Realistic Tree Kits and Hob-e-Tac®.

41" w x 47" h

### Clump-Foliage/Tree Kit Assortment ..... FC907

- 2 each TR1101-TR1106
- 3 each FC181-FC186
- 8 each S195



Product descriptions on page 34.



## HO SCALE SCENIC ACCENTS®

### HO Scale Scenic Accents®

#### Swinger Merchandiser .....A1804-3

This merchandiser includes nine Display Panels and two Brackets plus a separate dispenser for 12 bottles of Scenic Accents® Glue and 16 Gentle Grips®. This durable, compact merchandiser easily hangs on pegboard. Its unique ability to maximize inventory space makes it a sure bet, by incorporating swinging display panels with Panel Pulls for easy viewing of the HO scale Scenic Accents® (1:87). The Swinger comes with a colorful 6" x 20" header. Free offsetting goods with combined purchase of Merchandiser and Assortment. The free goods pay for your Merchandiser!

38" w x 33" h x 10" d



#### HO Scale Swinger Add-On Panel .....A1806

#### HO Scale Swinger Add-On Panel and Bracket.. A1806-1

#### Complete Assortment .....A1728

- 2 each A1821-A1922
- 12 each A198
- 4 each A200

#### Add-On Assortment .....A1727

- 4 each A1920-A1922

#### Add-On Assortment .....A1725

- 4 each A1917-A1919

#### Add-On Assortment .....A1723

- 4 each A1914-A1916



Swinger Merchandiser A1804-3 and Complete Assortment A1728

Product descriptions on pages 36-42.

## N SCALE SCENIC ACCENTS®

### N Scale Scenic Accents® Swinger Merchandiser .....A2106

Feature your N scale Scenic Accents® (1:16), on pegboard, with this space-saving Swinger Merchandiser display. Includes six Display Panels, Panels Pulls plus a Bracket that holds the Complete Assortment with room to grow. Free offsetting goods with combined purchase of Merchandiser and Assortment. The free goods pay for your Merchandiser!

18" w x 33" h x 10" d



#### N Scale Swinger Add-On Panel .....A2109

#### Grip and Glue Chute .....A2107

This optional Grip and Glue Chute hangs next to the N Scale Merchandiser and holds 16 Gentle Grips® and dispenses 12 bottles of Scenic Accents® Glue.

#### Grip and Glue Assortment .....A2108

- 12 each A198
- 4 each A200

#### Complete Assortment .....A2426

- 2 each A2121-A2193

#### Add-On Assortment .....A2425

- 2 each A2191-A2193

#### Add-On Assortment .....A2423

- 4 each A2170, A2177, A2180



Swinger Merchandiser A2106 and Complete Assortment A2426 (shown with optional Grip and Glue Chute A2107)

Product descriptions on pages 36-42.

## O SCALE SCENIC ACCENTS®

### O Scale Scenic Accents® Complete Assortment..... A2714

Order this assortment of O scale (1:48) Scenic Accents® and receive a full-color header which measures 20" x 6".  
21" w x 44 1/2" h

- 2 each A2721-A2738

### Add-On Assortment ..... A2713

- 3 each A2734, A2737, A2738

### Add-On Assortment (coming soon) ..... A2715

- 3 each A2739, A2740, A2741



Complete Assortment A2714



Product descriptions on pages 36-42.

## G SCALE SCENIC ACCENTS®

### G Scale Scenic Accents® Complete Assortment ..... A2520

Order this assortment of G scale Scenic Accents® (1:22.5) and receive a full-color header which measures 19" x 5 1/2".

29 1/2" w x 54 1/2" h

- 2 each A2521-A2553

### Add-On Assortment ..... A2519

- 2 each A2551-A2553

### Add-On Assortment ..... A2517

- 2 each A2548-A2550

### Add-On Assortment (coming soon) ..... A2650

- 3 each A2554, A2555, A2556



Complete Assortment A2520



Product descriptions on pages 43-45.



## SCENIC ACCENTS® ECONOMY PACKS

### Scenic Accents® Economy Packs

These assortments include one each of N and HO scale Assorted Farm, Worker and Figure Sets. The colorful packaging hangs on pegboard. Customers save over 30%. **Limited supply.**

**HO Scale Scenic Accents® Economy Pack Assortment** ..... A2050

- 1 each A2051-A2053

**N Scale Scenic Accents® Economy Pack Assortment** ..... A2060

- 1 each A2061-A2063

Product descriptions on page 46.



## BUILT-&-READY® STRUCTURES

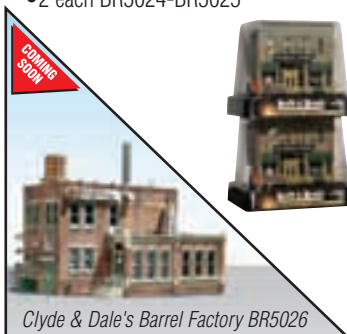
**Built-&-Ready® Structures Complete Assortment** ..... BR5003

Six HO scale pre-assembled, architecturally detailed buildings that are hand-painted with see-through, stackable packages and four-sided product visibility. Packages nest for easy stacking. Shipped in a separate protective box.

- 2 each BR5021-BR5026

**Add-On Assortment** ..... BR5001

- 2 each BR5024-BR5025



Complete Assortment BR5003

Product descriptions on page 47.



## PRODUCT POPPER

**Product Popper** ..... A1799

Showcase the new N and HO scale Scenic Accents®, or AutoScenes®, next to your cash register on the high-quality plastic Product Popper. Products should be changed every two weeks with new releases.

6 1/2" x 6 1/2" x 19"



## AUTOSCENES®

**AutoScenes® Complete Assortment** ..... AS5504

Twenty-four different scenes in true 1:87 HO scale...finely sculpted and custom painted capturing the '40s and '50s eras. Order this assortment and receive a full-color header. 22" x 28 1/2"

- 2 each AS5521-AS5544

**Add-On Assortment** ..... AS5501

- 3 each AS5537-AS5540

**Add-On Assortment** ..... AS5503

- 3 each AS5541-AS5544



Product descriptions on pages 48-49.



Complete Assortment AS5504

## MINI-SCENE®

### HO Scale Mini-Scene® Merchandiser ..... M129

This merchandiser is a counter or shelf display for the entire line of Mini-Scenes®. It includes a full-color header and a pewter patina finished Abandoned Log Cabin (M101) Built-Up displayed in a glass dome. The merchandiser holds twelve different Mini-Scenes®, twelve-color Paint Sets, Pewter Patina Finish and glass Display Domes.

34" w x 20" h x 14" d

### Mini-Scene® Assortment ..... M120

- 2 each M101-M112
- 5 each M126
- 6 each M125, M127

Product descriptions  
on page 50.

## SCENIC DETAILS®

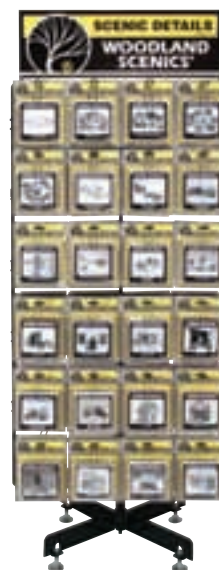
### HO Scale Scenic Details® Merchandiser ..... D299

This merchandiser displays 47 Scenic Details®. It is a two-sided spinner that sits on a counter or shelf. Includes a bright header.

16 1/2" w x 40" h

### Scenic Details Assortment ..... D295

- 2 each D201-D244
- 2 each D246-D248



Product descriptions on pages 51-54.

## COMPLETE SCENES

### HO Scale Complete Scenes Assortment ..... S5

Order this assortment of three different HO scale scenes! Each kit has a different size footprint.

- 2 each of S130-S132

### HO Scale Scene Kit Assortment ..... TS156

Order this assortment of Trackside Scenes and Complete Scenes.

- 1 each TS151-TS154
- 1 each S130-S132

Product descriptions  
on pages 55-56.

## TRACKSIDE SCENES

### HO Scale Trackside Scenes Merchandiser and Assortment ..... TS150

This cardboard merchandiser is a counter or shelf display that holds eight complete HO scale kits. Each kit contains over 70 pieces.

11" w x 12" h x 10 3/4" d

- 2 each TS151-TS154



Product descriptions  
on page 56.

## DRY TRANSFER DECALS

### Dry Transfer Decals Merchandiser ..... DT595

This merchandiser is a convenient counter or pegboard display that holds 40 different Dry Transfer Decals. It allows for immediate viewing and access. No assembly required.

23" w x 8 1/2" h x 10" d

### Dry Transfer Decals Assortment ..... DT594

- 2 each D245, DT501-DT516, DT551-DT563, DT570-DT575, DT601-DT611
- 4 each DT600



Counter Display



Pegboard Display

Product descriptions on pages 57-60.



## MODEL GRAPHICS®

### Model Graphics® Merchandiser.....MG700

Displays 64 different styles of high-quality Model Graphics® and holds six Dry Transfer Burnishers. It is a counter, shelf or pegboard spinner with a two-color header. 16" w x 28" h

### Model Graphics® Assortment.....MG795

- 2 each MG701-MG764
- 6 each DT600



Pegboard Spinner



Counter Spinner

Product descriptions on page 61.

## HOB-BITS®

### Hob-Bits® Merchandiser.....H899

This merchandiser is a counter, or pegboard spinner. It includes a two-color header with a chart for determining the appropriate fastener. Miniature machine screws are available in four different styles and a variety of sizes. Hex nuts, washers, wrenches and taps are easily displayed.

12" w x 24" h x 12" d

### Hob-Bits® Assortment.....H800

- 4 each H801-H816, H821-H836, H841-H856, H861-H876, H881-H888, H891-H898



Pegboard Spinner



Counter Spinner

Product descriptions on page 72.

## HOB-E-LUBE®

### Hob-E-Lube® Merchandiser.....HL695

This is a counter, shelf or pegboard merchandiser, which holds seven different lubricants. Also included is product information, so your customer can choose the right lubricant. 24" x 16"

### Hob-E-Lube®

### Assortment.....HL690

- 4 each HL650-HL657



Product descriptions on page 72.

## HOB-E-LUBE® PREMIUM OILS

### Hob-E-Lube® Premium Oils

### Assortment.....HL691

This assortment includes a free 8" x 8" backing card and displays four different Premium Oils. These oils have a special 2 1/4-inch needle tip applicator.

- 4 each of HL661-HL664

Product descriptions on page 72.

<b>A</b>			
Asphalt Top Coat.....	9		
AutoScenes.....	48-49		
AutoScenes Assortments.....	80		
<b>B</b>			
Ballast.....	28		
Ballast Shaker Assortment.....	75		
Blended Turf.....	18		
Books.....	4		
<i>Build A Display for Collectible Houses</i> (DVD, VHS).....	4, 71		
Building Kits.....	67, 69		
Built-&-Ready Structures.....	47		
Built-&-Ready Structures Asst.....	80		
Bushes.....	19		
<b>C</b>			
Canister Shaker.....	17		
Canister Shaker Set.....	17		
City & Industry Building Set.....	67		
Clump-Foliage.....	20		
Clump-Foliage/Tree Kit Merch.....	77		
Clump-Foliage/Tree Kit Asst.....	77		
Coal.....	28		
Coarse Turf.....	18		
Collectible House Display Kit.....	71		
Complete Landscape Kit.....	70		
Complete Scenes.....	55		
Complete Scenes Assortment.....	81		
Concrete Top Coat.....	9		
Connector Plate Set.....	64		
Corner Module Kit Stand.....	65		
Corner Module Kit.....	62		
Culverts.....	13		
<b>D</b>			
Dead Fall.....	26		
Dry Transfer Burnisher.....	57, 61		
Dry Transfer Decals.....	57-60		
Dry Transfer Decals Assortment.....	81		
Dry Transfer Decals Merchandiser.....	81		
<b>E</b>			
Earth Color Kit.....	15		
Earth Colors Liquid Pigment.....	15		
Earth Colors Liquid Pigment (Undercoat).....	15		
E-Z Water.....	27		
<b>F</b>			
Field Grass.....	21		
Fine-Leaf Foliage.....	23		
Fine Turf.....	18		
Flex Paste.....	9		
Flowering Foliage.....	26		
Flowers.....	26		
Foam Cutter Bow & Guide.....	8		
Foam Knife.....	8		
Foam Knife Blades.....	8		
Foam Nails.....	8		
Foam Pencils.....	8		
Foam Putty.....	9		
Foam Sheets.....	7		
Foam Tack Glue.....	8		
Foliage.....	22		
Foliage Clusters.....	20		
Fruit.....	26		
<b>G</b>			
Gentle Grips.....	46		
Glass Display Dome and Base.....	50		
Grand Valley.....	66-67		
Grand Valley Track Pack.....	67		
<b>H</b>			
Heat Tool.....	25		
Hob-Bits.....	72		
Hob-Bits Assortment.....	82		
Hob-Bits Merchandiser.....	82		
Hob-E-Lube Assortment.....	82		
Hob-E-Lube Lubricants.....	72		
Hob-E-Lube Merchandiser.....	82		
Hob-E-Lube Premium Oils.....	72, 82		
Hob-e-Tac.....	17		
Hot Wire Foam Cutter.....	8		
Hot Wire Foam Cutter Replacement Wire.....	8		
<b>I</b>			
Incline Sets.....	6		
Incline Starters.....	6		
International Hot Wire Foam Cutter.....	8		
<b>L</b>			
Landscape Assortment.....	76		
Landscape Center Merchandiser.....	76		
Landscape Half Assortment.....	76		
Landscaping Learning Kit.....	5		
Landscaping System.....	17-28		
Large Rolls.....	24		
Large Tree Kits.....	35		
Latex Rubber.....	16		
Layout Kits.....	66, 68		
Learning Kit Assortment.....	76		
Learning Kits.....	5		
Landscaping.....	5		
River/Waterfall.....	5		
Road System.....	5		
Rock Faces.....	5		
Scenery Details.....	5		
Trees.....	5		
Lichen.....	21		
Lightweight Hydrocal.....	14		
Low Temp Foam Glue Gun.....	9		
Low Temp Foam Glue Sticks.....	9		
<b>M</b>			
Mat Adhesive.....	25		
Merchandisers & Assts.....	74-82		
Mini-Scene.....	50		
Mini-Scene Assortment.....	81		
Mini-Scene Merchandiser.....	81		
Mini-Scene Paint Set.....	50		
Model Graphics.....	61		
Model Graphics Assortment.....	82		
Model Graphics Merchandiser.....	82		
<i>Model Scenery Made Easy</i> (DVD, VHS).....	4		
Mod-U-Rail System.....	62-65		
Connector Plate Set.....	64		
Corner Module Kit Stand.....	65		
Corner Module Kit.....	62		
Mod-U-Rail DVD.....	64		
Square Module Kit Stand.....	65		
Straight Module Kit Stand.....	65		
Straight Module Kit.....	62		
Module Kits.....	62		
Module Kit Stands.....	65		
Mold-A-Scene Plaster.....	12		
Mountain Valley Scenery Kit.....	70		
<b>P</b>			
Paving Tape.....	9		
Pewter Patina Finish.....	50		
Pine and Hardwood Forest Kits.....	35		
Plaster Cloth.....	7, 12		
Poly Fiber.....	22		
Premium Trees.....	30-31		
Premium Trees Assortment.....	77		
Premium Trees Merchandiser.....	77		
Product Popper.....	80		
Project Sheets.....	24		
Profile Boards.....	6		
<b>R</b>			
Ready Made Realistic Trees.....	32-33		
Ready Made Realistic Trees Asst.....	77		
Ready Made Realistic Trees Merchandiser.....	77		
Ready Made Trees Value Pack Assortment.....	77		
Ready Made Trees Value Pack Merchandiser.....	77		
ReadyGrass Vinyl Mat.....	24-25		
Heat Tool.....	25		
Landscape Kit.....	25		
Large Rolls.....	25		
Mat Adhesive.....	25		
Project Sheets.....	24		
Road Kit.....	25		
Small Rolls.....	24		
Tree Kit.....	25		
Water Kit.....	25		
ReadyGrass Vinyl Assortment.....	76		
ReadyGrass Vinyl Mat Merch.....	76		
Realistic Tree Kits.....	34		
Realistic Water.....	27		
Retaining Walls.....	13		
Risers.....	6		
River Pass.....	68-69, 71		
River Pass Building Kits.....	69		
River Pass Layout Kit.....	68		
River Pass Scenery Kit.....	68, 71		
River Pass Track Pack.....	68		
River/Waterfall Learning Kit.....	5		
Road System.....	9		
Paving Tape.....	9		
Smooth-It.....	9		
Top Coat (Asphalt and Concrete).....	9		
Road System Learning Kit.....	5		
Rock Faces Learning Kit.....	5		
Rock Molds.....	14		
<b>S</b>			
Scene-A-Rama School Projects.....	73		
Add-On Kits.....	73		
Diorama Kits.....	73		
Project Accessories.....	73		
Project Bases.....	73		
Project Book.....	73		
Project Kits.....	73		
Trees.....	73		
Scene Kit Assortment.....	81		
Scenery Details Learning Kit.....	5		
Scenery Kits.....	68, 70-71		
Scenic Accents.....	36-46		
Economy Packs.....	46		
G Scale.....	43-45		
N, HO, O Scale.....	36-42, 46		
Scenic Accents Assortments.....	79		
G Scale.....	79		
HO Scale.....	78, 80		
HO Scale Economy Packs.....	80		
N Scale.....	78, 80		
N Scale Economy Packs.....	80		
O Scale.....	79		
Scenic Accents Glue.....	46		
Scenic Accents Merchandisers.....	78		
HO scale.....	78		
N Scale.....	78		
Scenic Cement.....	17		
Scenic Details.....	51-54		
Scenic Details Assortment.....	81		
Scenic Details Merchandiser.....	81		
Scenic Glue.....	17		
Scenic Ridge.....	66-67		
Scenic Ridge Track Pack.....	67		
Scenic Sprayer.....	17		
Shaker Merchandiser.....	75		
Small Rolls.....	24		
Small Tree Kits.....	35		
Smooth-It.....	9		
Soft Flake Snow.....	26		
Square Module Kit Stand.....	65		
Static Grass Flock.....	19		
Static Grass Flock Assortment.....	75		
Straight Module Kit Stand.....	65		
Straight Module Kit.....	62		
Stumps.....	26		
<i>SubTerrain: Build a Layout Fast and Easy</i> (DVD, VHS).....	4		
SubTerrain Dealer Built-Up.....	74		
SubTerrain Display Assortment.....	74		
SubTerrain Expansion Assortment.....	74		
SubTerrain Expansion Merch.....	74		
SubTerrain Lightweight Layout System.....	6-9		
<i>SubTerrain Manual</i> .....	4		
SubTerrain Merchandiser.....	74		
SubTerrain Project Foam Asst.....	74		
SubTerrain Scenery Kit.....	70		
<b>T</b>			
Talus (Rock Debris).....	16		
Teaching Aids.....	4		
Terrain Center Merchandiser.....	75		
Terrain Display Assortment.....	75		
Terrain Display Half Assortment.....	75		
Terrain System.....	12-16		
<i>The Clinic</i> (DVD, VHS).....	4		
The Scenery Kit.....	70		
<i>The Scenery Manual</i> .....	4		
Top Coat (Asphalt and Concrete).....	9		
Town and Factory Building Set.....	67		
Track-Bed.....	10-11		
Rolls.....	11		
Sheets.....	11		
Strips.....	11		
Strips (Bulk).....	11		
Super Sheets.....	11		
Track-Bed Assortment.....	75		
Track-Bed Merchandiser.....	75		
Trackside Scenes.....	56		
Trackside Scenes Assortment.....	81		
Tree Armatures.....	23		
Tree Kits.....	35		
Hardwood Forest.....	35		
Large Tree.....	35		
Pine Forest.....	35		
Small Trees.....	35		
Trees Learning Kit.....	5		
Tunnel Liner Form.....	16		
Tunnel Portals.....	13		
Turf Shaker Assortment.....	75		
<b>U</b>			
Underbrush.....	19		
Underbrush, Bushes and Flock Assortment.....	75		
Undercoat Pigment.....	15		
<b>V</b>			
Videos.....	4, 64, 71		
<b>W</b>			
Water Effects.....	27		
Models and photos on pages 5, 9, 12, 16, 17, 26, and 34 by Pelle K. Sæborg.			
Model and photo on page 21 by W. Allen McClelland.			
Model on page 53 by Michael L. Fuller.			





**WOODLAND SCENICS®**  
P.O. BOX 98 • LINN CREEK, MO 65052  
Phone 573-346-5555 • Fax 573-346-3768  
[www.woodlandscenics.com](http://www.woodlandscenics.com)

FIRST CLASS  
U.S. POSTAGE  
**PAID**  
Permit #01  
Linn Creek, MO  
65052



Photos in catalog are modeled with Woodland Scenics products.

**XLITWSCATALOG • R100**

©2006 OCO \$2.50

